



Workshop unit 320

Technical data sheet



- Marking area 120 x 100 mm (X/Y)
- Available marking technologies: scribe and dot marking
- DataMatrix coding (ECC 200)
- Universal and flexible marking unit for direct part marking
- Designed for individual and small batch production
- X/Y-axes of the coordinate unit with precise linear slides
- Drive with stepping motors and ball spindle drives

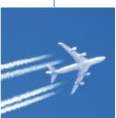


Application area

The workshop unit 320 is a compact marking unit for permanent and flexible markings on almost every material. This BORRIES product offers the best technology in a low-wear and low maintenance design for an unrivalled competitive price. The large marking area offers the opportunity to mark single or multi line texts, in free scalable size. Angle and circulate markings are also possible as well as date, time and consecutive numeration. The marking data can be entered easily via the included BORRIES marking software VisuWin SE. A graphical user interface enables a quick installing and adapting of marking pictures (layouts).

Options

- Manual plate module
- The optional touchscreen 12.1" with BORRIES marking software VisuWin SE or the optional membrane keyboard with integrated display and the BORRIES marking software LDM macro are easy and quick ways of entering the marking data.





Technical data

Property	Measure, Unit, Explanation
Dimensions workshop unit (W x D x H)	350 x 460 x 705 mm
Marking area (X,Y)	120 x 100 mm
Weight	approx. 33 kg
Marking speed (depending on character size and shape, marking process and material)	approx. 1 – 3 characters/ second
Character height	free scalable from 0.5 mm
Documentation	German or English more languages are optional
Penetration depth marking tip (depending on material, marking head and marking process)	approx. 0.01–0.2 mm (see data sheet marking heads)
Noise level with scribe markers	max. 75 dB(A) (depending on the marking material and operating pressure)
Font	DIN 1451, 7 x 5 dot marking Data Matrix code other fonts, special signs and logos are optional
Marking direction	straight line, angle or circular arc
Option: Manual plate module	for plates up to 120 x 100 mm
Requirements PC/ operating system	CPU min. 1.5 GHz, min. 1024 MB Ram, min. 100 MB free space on the hard drive, interfaces: network, optional USB 2.0 or serial interface for barcode scanner, operating system Windows XP, Windows 7, Windows 8.1
Option: 12.1" TFT LCD PanelPC	1024 x 768 Resistive Touch Screen, 1.6 GHz CPU, 1GB DDR RAM, external power supply 230V/25W
Option: barcode scanner (connection to PC)	Code 39 (preset) Transmission STX/ETX (preset)

Power supply

Power supply with connecting cable	230 V AC ± 10 %, 50/60 Hz or 115 V AC ± 10 %, 50/60 Hz switchable
Pneumatic connection (supply pressure) technically provided compressed air	At least 5 bar dried, oil-free, filtered with 50 µm
Working pressure (marking pressure)	At least 2 bar up to max. 4 bar

Technical details are subject to change.

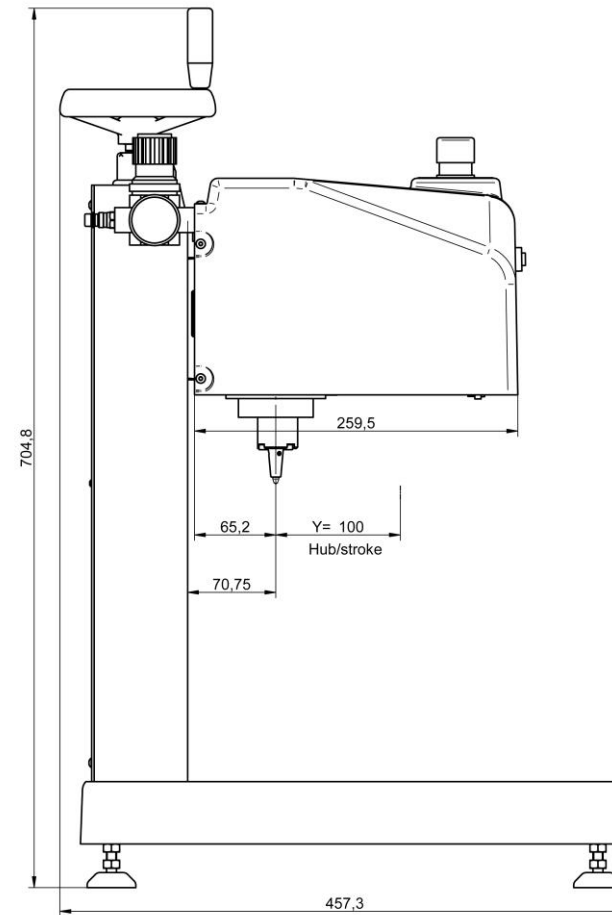
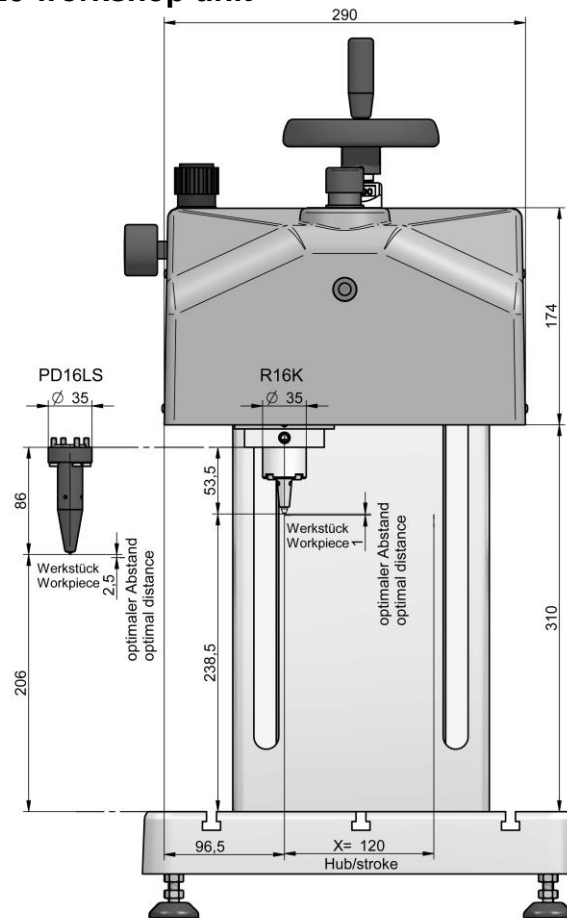


320 workshop unit with manual plate module



320 workshop unit with integrated display

Drawing 320 workshop unit



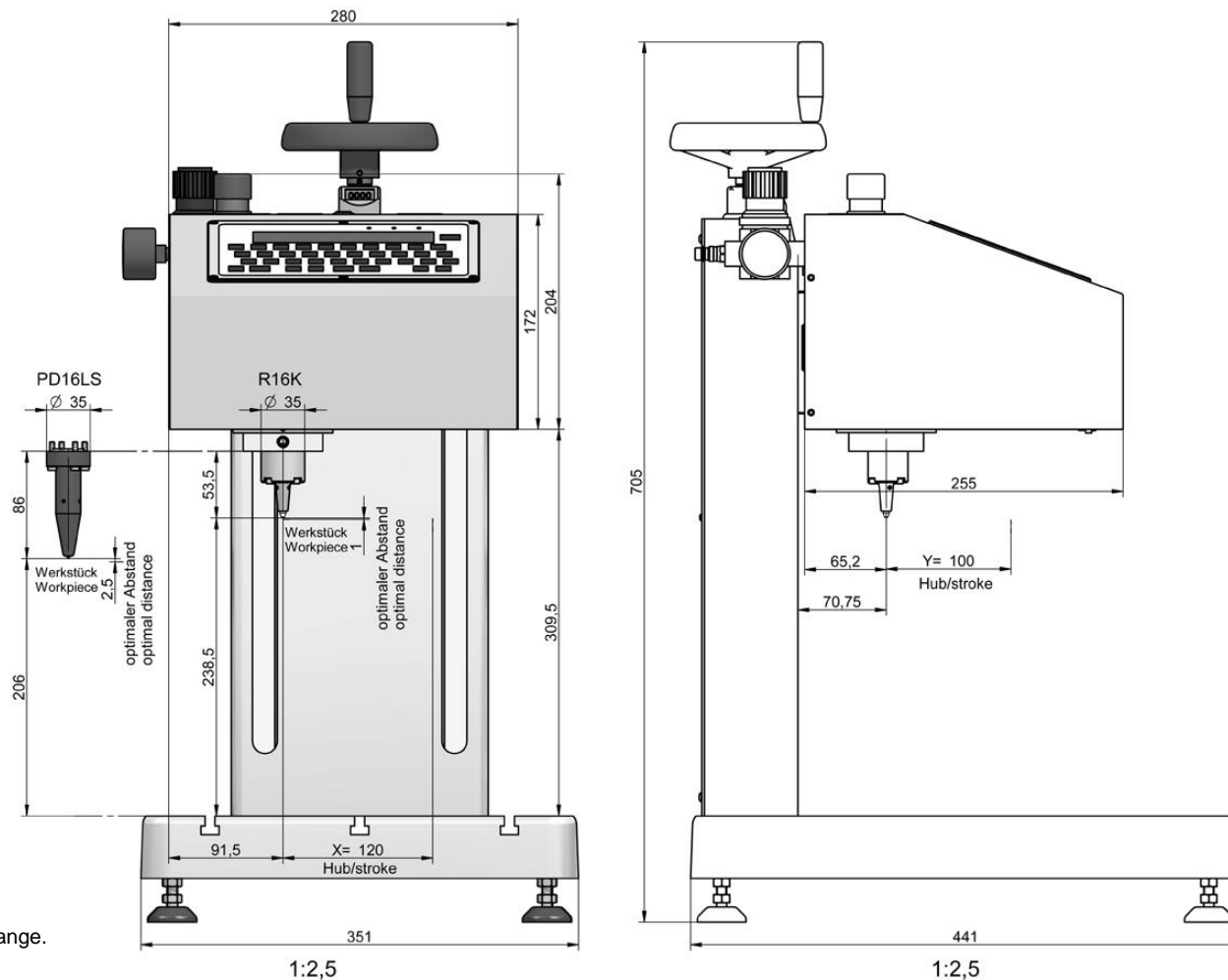
Dimensions in mm

Technical details are subject to change.

Date: July 2015



Drawing 320 workshop unit with integrated display



Dimensions in mm
 Technical details are subject to change.
 Date: August 2015

