



HOSPITAL & HEALTH CENTERS

About Us



DORCE Prefabricated Building & Construction Industry Trade INC., founded in 1982, is a **Turkish General Contractor**, with a vast worldwide experience, which provides Engineering, Procurement and Construction services for projects requiring high quality services in extreme environments.

Dorce stands out with its ability to quickly mobilize & operate in the harshest conditions in several countries at the same time.

Dorce owns one of the largest PREFABRICATED steel structures manufacturing facility in the world. The manufacturing facility located in Ankara – Turkey, has 100.000 m² total area (55.000 m² workshop area)

with Manufacturing Capacity:

- 160,000 m² Panelized Prefabricated Building Production / Month or,
- 3,600 Modular Units (Accommodation) / Month
- 1,900 Tons production of Heavy IndustriContainersal Steel Buildings / Month

DORCE'S CRITERIA OF SUCCESS

- Timely, in budget project completion
- Providing highest quality construction services
- Highest standards in Health, Safety and Environment
- Top management involvement and speedy decision making
- DORCE considers it's personel as it's most valued asset which brings success to the company.

About Us



DORCE has successfully completed many TURNKEY PROJECTS in all around the world for numerous ministries, governments, international companies, charity organizations and UN departments, in various fields of engineering, construction, oil and gas, military camp and emergency units in below listed countries:

MIDDLE EAST	•IRAQ, UAE, QATAR, OMAN, JORDAN YEMEN, IRAN
ASIA	•AFGHANISTAN, AZERBAIJAN, GEORGIA, KAZAKHSTAN, KYRGYZSTAN, MONGOLIA, NEPAL, PAKISTAN, RUSSIAN FEDERATION, TAJIKISTAN, TURKMENISTAN, UZBEKISTAN
EUROPE	•ALBANIA, BOSNIA HERZIGOVINA, BULGARIA,GREAT BRITAIN, KOSOVO, IRELAND, MACEDONIA, MOLDAVIA, ROMANIA
AFRICA	•ALGERIA, CAMEROON, DEMOCRATIC REPUBLIC OF CONGO, DJIBOUTI, ECUADOR GUINEA (MALABO ISLAND), GABON, GUINEA, LIBYA, NIGERIA, NIGER, MAURITANIA, MOROCCO, REPUBLIC OF CONGO, SUDAN
SOUTH AMERICA	•VENEZUELA
AUSTRALIA	•AUSTRALIA

Productions



Turnkey Camp Projects:

- Worker Residential Cities,
- Worker / Labor Camps,
- Military Camps,
- Refugee Camps,
- Emergency Accommodation Camps

including; Offices, Dormitories, Dining Halls and Kitchens, WC-Shower Units, Laundries

Turnkey Industrial Facilities:

- Industry Buildings
- Factory Buildings,
- Aircraft Hangars,
- Gymnasiums,
- Workshops,
- Warehouses,
- Cold Rooms,
- Garages

Turnkey Social Facilities:

- Housing and Residence Units,
- Hotels,
- Holiday Villages,
- Schools,
- Student Dormitory Buildings,
- Nurseries,
- Hospitals,
- Clinics,
- Office and Management Buildings,
- Police Stations,
- Police Schools,
- Prisons,
- Sporting Halls
- GSM Shelters

General Contracting Projects



- Housing & Residence Units,
- School & Nurseries,
- Hotels and Holiday Villages,
- University Campus Buildings,
- Industrial Buildings,
- Factory Buildings,
- Business Center and Shopping Malls,
- Hospitals,
- Prisons,
- Aircraft Hangars,
- Sporting Halls

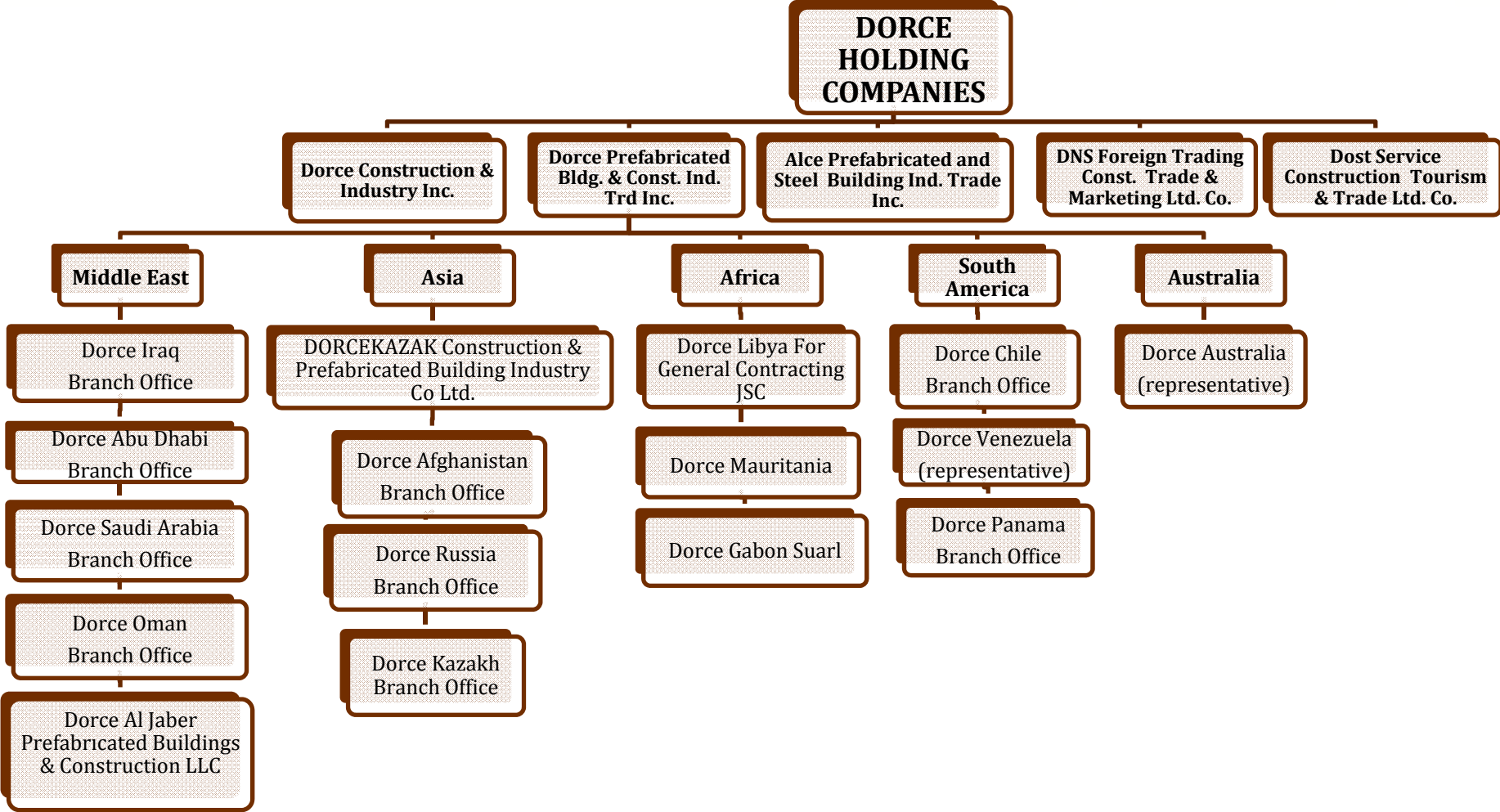


Services



- **Architectural and Engineering Design**
- **Site Survey**
- **Building Supply**
- **Infrastructure Works And Utilities**
 - ** Site Preparation
 - ** Ground and Foundation Works
 - ** Site Connection Ways and Parking Areas
 - ** Site Electrical Installation Works
 - ** Site Mechanical Installation Works
 - ** Water Treatment Systems
 - ** Fire Detection, Fighting and Controlling Systems
 - ** Generators
 - ** Waste Water and Clean Water Tanks
 - ** Landscaping
 - ** Security Fencing
- **HVAC Systems**
- **Furnishing**
- **Transportation**
- **Assembling and Dismantling**
- **Operation and Maintenance**

Holding Chart



er if ca es



- TS-EN-ISO 9001: 2008 Certificate of Quality Management System (Turkey)
- OHSAS 18001 : 2008 Certificate of Management System of Occupational Health & Safety (Turkey)
- TS-EN-ISO 14001:2004 Certificate of Environmental Management System (Turkey)
- S - Y S r i d q a e t i a e T u k y
- S - K S 0 : 0 1 Q l t n g m t S s e C r i c t a a h t)
- I O 0 1 2 8 - u l y M n e e t y t m C t f c e (b D a i
- S 2 3 8 a d r n o m y C r f c t u s a
- a a s a e i i a f C f r i y C n a e
- a k s a r i i t f o f r i M b e C m Trailer
- Kazakhstan Certificate of Conformity – Modular Panel Building
- Kazakhstan Certificate of Conformity – Pre-engineered Steel Building

Test Reports



- **Fire resistance certificate to classification E45, EI30 class** for Single layer, Single framework, plasterboard partition interior wall **(Turkey)**
- **Fire resistance certificate to classification EI60 class** for Double layer, Single framework, plasterboard and cement bounded particle board partition interior wall **(Turkey)**
- **Fire resistance certificate to classification EI60 E90 class** for Double layer, Single framework, plasterboard partition interior wall **(Turkey)**
- **Fire resistance certificate to classification EI₂30 class - opening towards the fire and E30 class - both opening direction** for door system with Okal board insulation, one full -one half wooden leaf and steel frame on a flexible supporting construction **(Turkey)**
- **Fire resistance certificate to classification EI₂30 class - opening towards the fire and E30 class - both opening direction** for door system with Okal board insulation, wooden leaf and steel frame on a flexible supporting construction **(Turkey)**

Test Reports



- Fire test report of DORCE exterior doors resistant for 60 minutes in accordance with ISO 3008 and TS EN 1363-1364 **(Turkey)**
- Fire test report of DORCE interior doors resistant for 26 minutes in accordance with ISO 3008 and TS EN 1363-1364 **(Turkey)**
- Fire test report of DORCE exterior wall panels resistant for 60 minutes in accordance with ISO 3008 and TS EN 1363-1364 **(Turkey)**
- Fire test report of DORCE interior wall panels resistant for 60 minutes in accordance with ISO 3008 and TS EN 1363-1364 **(Turkey)**
- Test certificate of fire resistance of DORCE glass wool insulated wall panels for 120 minutes in accordance with NFPA 5000, NFPA 251 and ASTM-E119 **(Turkey)**
- Test certificate of fire resistance of DORCE rock wool insulated wall panels for 120 minutes in accordance with NFPA 5000, NFPA 251 and ASTM-E119 **(Turkey)**
- The test certificate of fire resistance of DORCE building chassis for 120 minutes in accordance with the norms of NFPA 5000, NFPA 251 and ASTM-E119 **(Turkey)**

Safety Awards



The philosophy is to strive to provide the best service to its Clients at all times. In doing so, Dorce INC. ensures its management’s commitment to high standards in Quality, Health , Safety and Environmental Issues concerning its Clients, Employees and Community in general, while providing optimum solutions to construction projects.



**(400+46) BED UNIVERSITY HOSPITAL
PROJECT (Design & Built)
BASRAH / IRAQ**

(400+46) BED UNIVERSITY HOSPITAL PROJECT
(Design & Built) BASRAH / IRAQ



Type of Work:

Turnkey Concrete Hospital Building and Concrete Residential Building for Hospital Staff

Scope of Work:

Construction of Hospital Building and Residential Building for hospital staff including; medical equipments, furnitures with mechanical-electrical installations, medical information systems, nurse calling system, supply of medical gas system with installation, education and maintenance for one year.

Duration of the Work:

40 Months

Total Site Area :

16.800 m²

Total Building Area:

58.000 m²

(400+46) BED UNIVERSITY HOSPITAL PROJECT
(Design & Built) BASRAH / IRAQ



(400+46) BED UNIVERSITY HOSPITAL PROJECT
(Design & Built) BASRAH / IRAQ



(400+46) BED UNIVERSITY HOSPITAL PROJECT
(Design & Built) BASRAH / IRAQ





**FOUR GENERAL HOSPITALS (160 BED)
APURE, BARINAS, MERIDA, GUARICA
VENEZUELA**

FOUR GENERAL HOSPITALS (160 BED)
APURE, BARINAS, MERIDA, GUARICA- VENEZUELA



Type of Work:

Steel construction 4 hospital buildings (Each 160 bed)

Scope of Work:

Supply of hospital buildings, including; steel framing, assembly workmanship in Venezuela.

Duration of the Work:

March-November 2012

Total Building Area

57,800 m²

FOUR GENERAL HOSPITALS (160 BED)
APURE, BARINAS, MERIDA, GUARICA- VENEZUELA



FOUR GENERAL HOSPITALS (160 BED)
APURE, BARINAS, MERIDA, GUARICA- VENEZUELA



FOUR GENERAL HOSPITALS (160 BED) APURE, BARINAS, MERIDA, GUARICA- VENEZUELA



Barinas



FOUR GENERAL HOSPITALS (160 BED) APURE, BARINAS, MERIDA, GUARICA- VENEZUELA



Merida



FOUR GENERAL HOSPITALS (160 BED) APURE, BARINAS, MERIDA, GUARICA- VENEZUELA



FOUR GENERAL HOSPITALS (160 BED) APURE, BARINAS, MERIDA, GUARICA- VENEZUELA



Guarica





**HEALTH CENTER & NURSERY BUILDING
ANKARA / TURKEY**

HEALTH CENTER & NURSERY BUILDING
ANKARA / TURKEY



Type of Work:

Health Center and Nursery Building

Scope of Work:

Supply of prefabricated steel construction buildings; electrical – sanitary installation, heating system, survey, site preparation, concrete foundation works, transportation and assembly.

Duration of the Work:

2000

Total Building Area:

1.350 m²

HEALTH CENTER & NURSERY BUILDING
ANKARA / TURKEY



HEALTH CENTER & NURSERY BUILDING ANKARA / TURKEY



HEALTH CENTER & NURSERY BUILDING ANKARA / TURKEY



HEALTH CENTER & NURSERY BUILDING ANKARA / TURKEY



HEALTH CENTER & LABORATORY ANKARA / TURKEY



Type of Work:

Health Center –Laboratory

Scope of Work:

Supply of Modular Steel Construction Prefabricated Prestige Building with electrical – sanitary installation, heating system, survey, site preparation, concrete foundation works, transportation and assembly.

Duration of the Work:

August 2006

Total Building Area :

1.820 m²

HEALTH CENTER & LABORATORY ANKARA / TURKEY





**HEALTH CENTER
DOHA / QATAR**

Type of Work:

Health Center and Nursery Building

Scope of Work:

Supply of Modular Prefabricated Building elements, PVC White window frames, swats, sunblind, all internal and external doors, electrical and sanitary installation materials, PVC floor covering, emergency lightening, all custom duties in Turkey, all assembly works.

Duration of the Work:

August 2008

Total Building Area :

406,97 m²

HEALTH CENTER DOHA / QATAR





MOBILE HOSPITAL TURKEY



MOBILE HOSPITAL TURKEY



Type of Work:

Mobile Hospital with 25 Unit of Containers

Scope of Work:

Supply of Containers with all container elements, external walls painting , PVC windows frames, PVC floor covering, electrical and sanitary installation materials, all internal and external doors.

Duration of the Work:

February-July 2010

MOBILE HOSPITAL TURKEY



This is the first mobile surgical hospital and mobile first aid station of Turkey, to be used by Turkish Armed Forces during war and peace, as per the contract signed with T.R. Ministry of Defense Under secretariat for Defense Industries.

Project consist of two facilities "**Surgical Field Hospital**" and "**Mobile First Aid Station**". Structure is made from aluminum and steel containers and inflatable tents. All the units of the system are transported by tactical wheeled vehicles which are also supplied within the scope of the project.

Surgical Field Hospital

Surgical field hospital is a mobile hospital with 30 Beds and an intensive care unit, where advanced surgical treatments, first aid, bleed stopping, life, and organ saving activities are performed.

The hospital is in modular structure and has a capacity to perform concurrently 4 surgical operations and intensive care with a unit having 6 intensive care beds. The hospital has 30 beds, besides 6 intensive care beds. It is possible to increase capacity up to 60 beds.

system has been designed as modular structure.

Emergency service and surgery rooms of the hospital can be made functional within 2 hours.

Mobile First Aid Station (MFAS)

Mobile first aid station, is the first aid center, where triage treatment is made for patients, applying necessary cures to lightly injured, walking wounded ones and be dispatched to the front thereafter, emergency first aid, advanced life support and bleed stopping surgery is applied as life saver to the seriously wounded ones and enabling the patients are quickly dispatched to the rear hospitals and consequent discharging preparations are performed for this intention.

First aid station is in modular structure and has a capacity to utilize performing of concurrently 2 emergency treatments and operations as well as being able to apply care and treatment to total 20 patients as 6 intensive care and 14 bedfast cares.

Triage tent and four dependent units of the First Aid Station can be made functional within 1 hour 15 minutes.

















■ **HEAD OFFICE:**

Aşağı öveçler Mahallesi 1325. Sokak No:6, 06460, Ankara / TÜRKİYE

Phone: +90 312 472 82 10 (pbx) Fax : +90 312 472 82 18-19

Web : www.dorce.com.tr E-mail: dorce@dorce.com.tr

■ **FACTORY:**

Ankara-İstanbul Kara yolu, 29.km 06105 Sarayköy, Ankara /
Türkiye

Phone: +90 312 815 51 65 - 72 Fax : +90 312 815 51 71