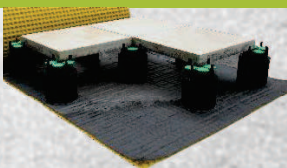


Volker Fischer

VOLFI Systems for state-of-the-art slab laying

Product Catalogue

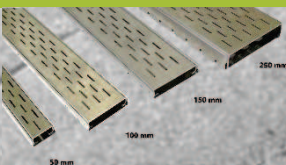
Accessories for laying paving
and slabs...



...on patios and balconies



...for paths and gravel beds



...on green roofs & flat roofs



Volker Fischer

VOLFI Systems for state-of-the-art slab laying

VOLFI – System Partner for State-of-the-art Slab Laying

The success story starts in 1995

Just 15 years ago, who could have imagined pedestal supports, height alignment with millimetre precision, footfall sound decoupling, lightweight construction and countless joint types? Exacting customer demands for perfectly laid patios, balconies, green roofs and outdoor facilities pose technical challenges for all those involved. Architects, construction companies and dealers who set themselves up with the right system components from an early stage benefit from satisfied customers and efficient planning and installation. It is not uncommon for reworking and fine-tuning to dominate everyday life in landscaping and gardening due to a lack of system products.

As specialist trade partner, VOLFI is a leading German manufacturer of systems for gardening and landscaping, with more than 25 years of experience. VOLFI Systems are a byword in the industry for quality, reliability and innovation. The flexibly combinable and comprehensive system offers decisive advantages when laying slabs and paving in outdoor areas.

The successful family business was established in 1995 and is now being managed by the 2nd generation. Most of the articles are produced and packaged in the Sauerland region, using our own tools. VOLFI has wide ranging references and expertise in implementing large projects. Many products are patented or subject to legal protection and are available exclusively from VOLFI. Customers have sufficient stocks, in many colours and material grades, at their disposal.

The well organised, modern high-bay warehouse guarantees short delivery times. Products with labels that incorporate your own logo can be delivered at short notice, within a few working days. Quality-tested raw materials guarantee a consistently high quality standard and durable, flawless products.



Volker Fischer

VOLFI Systems for state-of-the-art slab laying

Paving planning made simple!

For a quick quotation, the right materials have to be selected promptly.

With this in mind, German manufacturer VOLFI has developed an online Patio Planner that is quick and easy to use. This helpful tool quickly provides an individually tailored solution for your construction project, based on just a few details. This offers an innovative way of finding all the combinations of pedestal supports required for the specified heights. Structured illustrations clearly explain how the pedestal supports are put together. Various substrates and slab types, from natural stone slabs to ceramic tiles, are accommodated by VOLFI's specially developed systems. Thanks to the modular principle, joint widths of 1 mm to 50 mm are possible. When it comes to creating durable and precisely laid paving, proper planning is the crucial factor. With its Patio Planner, VOLFI continues to promote state-of-the-art slab laying and is your first point of contact for future new developments.



You can also use the VOLFI Quantities Calculator to easily determine how many cross spacers or T joints will be needed when laying slabs or paving.

This is the ideal planning aid for all landscaping companies, roofers or tilers, for use on site.

Download it now, free of charge, from the app store. The Quantities Calculator is also available on our website.

Further information at:

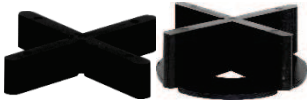
→ www.volfi-systems.com



Volker Fischer

VOLFI Systems for state-of-the-art slab laying

Contents



VOLFI Cross Spacers

Our classic product in countless variations. With or without a 2 mm base plate. For laying on solid/level substrates.

Pages 6-7



VOLFI Paving Spacers

Extra-wide spacers for paving joint widths of up to 50 mm, green joints or grass cross spacers. For stack bond, stretcher bond or as line spacers.

Page 8



VOLFI Disc- and Plate-Spacers

Solid version: The ideal aid for laying paving on a gravel bed. Extra-large bearing surface for better slab stability.

Rubber-coated version: For footfall sound insulation and decoupling or as a low-height standalone slab support.

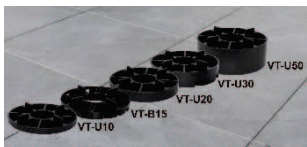
Page 9



VOLFI Basic-Support

Simple, low-height slab support with dimpled base for ideal drainage. More than 60 versions available for different joints. Also available with rubber coating.

Page 10-11



VOLFI Stackable Support System

For universal use as high-quality, stackable supports (10 to 260 mm) or for elevations. Can be combined with various VOLFI system components.

Page 12-15



VOLFI Combination Paving Support (rigid and self-levelling)

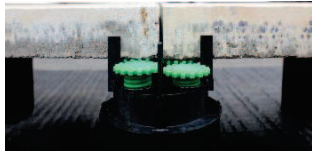
Adapter element for a wider range of joint options by inserting VOLFI basic-supports. Can be used in all VOLFI systems to achieve varying joint widths.

Page 16-17

Volker Fischer

VOLFI Systems for state-of-the-art slab laying

Contents



VOLFI ZRV 4-Corner adjustable Pedestal: gradients up to 5%

Pedestal support with four separately adjustable support points, various positioning lugs, and screw lock mechanism. Heights of up to 260 mm are possible in combination with VOLFI Stackable Supports (+Click System). Subsequent height adjustment is possible through the joint. Alternative for heights below 35 mm: SKT-V. Page 18-20



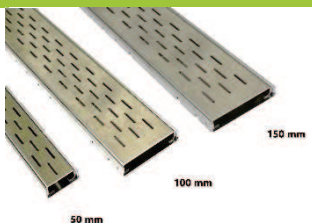
Twist Pedestal

Continuously adjustable pedestal supports in various heights for laying dimensionally accurate slabs on solid/level substrates. Subsequent height adjustment is possible through the joint, using the Premium Adjustment Key. Page 21-23



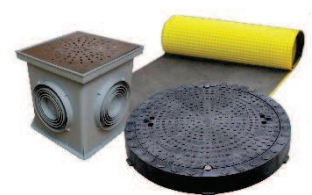
Uni Profiles / Gravel Stop Profiles

Ideal as paving edging, gravel stop profile, boundary profile and for green roofs. Different material thickness, and heights from 15 to 250 mm. Accessories: inside corners, outside corners, connectors and cover profiles (for Uni Profile) Page 24-27



VOLFI Drainage Channels/Grids/Gullies

Reliable drainage of surface water from paving. Box channel, whose height can be increased with millimetre precision using the VOLFI System. Drainage grids, drainage gullies and floor drains for rapid water discharge from large areas of paving. Page 28-32



Drainage Mat / Shaft Cover / Inspection Chamber

Drainage mat for controlled water runoff from large areas of paving. Stackable inspection chamber with various covers. Shaft cover, round and made of aluminium or plastic, square and made of stainless-steel or galvanised, recessed for filling or paving, optional odour-proof seal. Page 33-35



Accessories for Installation and Height Adjustment

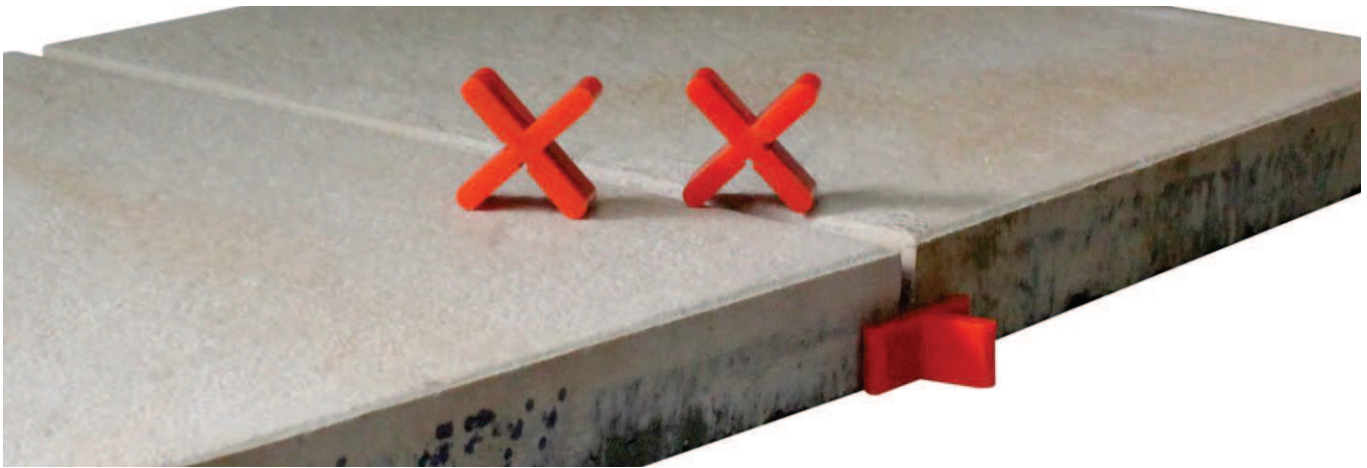
Aids for the professional installation of all VOLFI products, particularly for height adjustment with millimetre precision and for ensuring slab stability. Page 36-39

Volker Fischer

VOLFI Systems for state-of-the-art slab laying

VOLFI Cross Spacers

Spacers for easy, systematic slab laying. No slab height increase.



Solid, level substrates



Gravel bed



Bitumen sheeting with rubber decoupling



Sealing membrane with rubber decoupling

- Snap-off lugs or T joints for edge slabs or stretcher bond
- Also available with fixed lug
- "Made in Germany" quality, proven over many years
- Available in special colours, on request (see data sheet)

Four joint heights (10, 19, 30 or 50 mm)

Nine joint widths (2, 3, 4, 5, 6, 8, 10, 12 or 15 mm)



Cross spacers and T pieces in various joint widths and heights



Cross spacers and T pieces in various widths, heights and colours

Data sheet



Downloads: 01.01-01
www.volfi.de

Volker Fischer

VOLFI Systems for state-of-the-art slab laying

VOLFI Cross Spacers with Base Plate

Spacers with 2 mm base plate and 2 mm height increase for easy slab laying



Solid, level substrates



Gravel bed

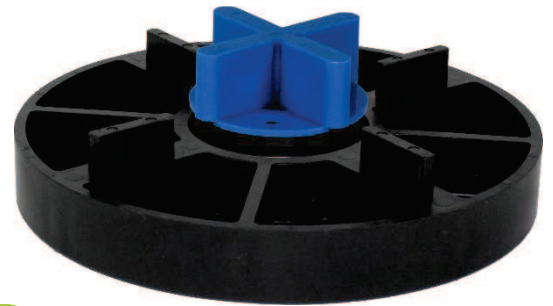


Bitumen sheeting with rubber decoupling



Sealing membrane with rubber decoupling

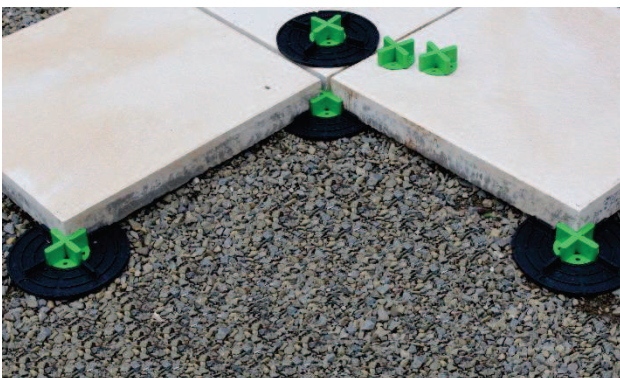
- The base plate practically eliminates frost heave
- T joints for edge slabs or stretcher bond
- Four holes in the base allow screw fixing
- “Made in Germany” quality, proven over many years
- Also available in special colours (see data sheet)



FK-B 8/22-50 set in VT-U20

Three joint heights (12, 22 or 52 mm)

Six joint widths (2, 3, 4, 5, 6 or 8 mm)



FK-B set in VP-U 4/10



FK-B cross spacer, 52 mm joint height

Data sheet



Downloads: 01.04-01
www.volfi.de

Volker Fischer

VOLFI Systems for state-of-the-art slab laying

VOLFI Paving Spacers

For creating grass/green joints with even spacing



Solid, level substrates



Gravel bed



For green joints



Sealing membrane with rubber decoupling

- Available for stack or stretcher bond, as long or short line spacers or for hexagonal paving
- Excellent water permeability
- Uniform joint widths
- If properly laid, vehicular loading is possible
- “Made in Germany” quality, proven over many years



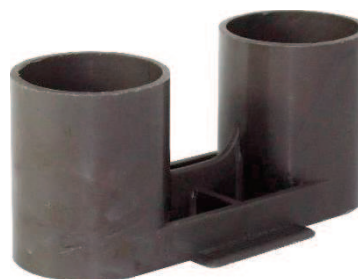
Paving Spacers OE-T, OE-K, OE-SK, OE-SL and OE-SKT

Four joint heights (25, 30, 38 or 45 mm)

Eight joint widths (10, 17, 20, 25, 30, 36, 40 or 50 mm)



Paving Spacer OE-K



Paving Spacer OE-SK

Data sheet



Downloads: 02.03-01
www.volfi.de

Volker Fischer

VOLFI Systems for state-of-the-art slab laying

VOLFI Disc- and Plate-Spacers

Large bearing area with low installation height

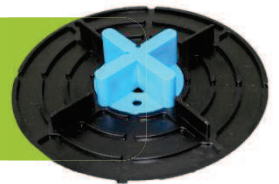


- ✓ Solid, level substrates
- ✓ Gravel bed*
- ✓ Bitumen sheeting with rubber decoupling
- ✓ Sealing membrane with rubber decoupling

- Joint pattern well secured thanks to widely spaced positioning lugs
- Prefabricated supports available with I joints for edge slabs and with T joints for stretcher bond
- Flexible joint widths of 2 to 8 mm possible (also in combination with FK-B/FK-BT Cross Spacers set in VOLFI Plates)

Extra-large diameter for secure fixing of the slabs: 140 mm

Three base plate heights (2 or 5 mm, or 10 mm with dimpled base)



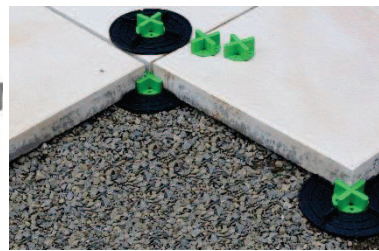
*Gravel bed not recommended for rubber-coated version or VP-N (10mm height) *FK-B 8/22-50 set in VP-U 4/10 with 4 lugs*



VP-N 4/10 with 4 lugs and dimpled base



VP-UI 4/10 with 2 lugs and WAE-K Wall Spacer



Example: VP-U 4/10 with 4 lugs and FK-B

Data sheet



Downloads: 04.03-01
www.volfi.de

Volker Fischer

VOLFI Systems for state-of-the-art slab laying

VOLFI Basic Support

For easy slab laying with 10 mm installation height and many joint versions



Solid, level substrates



Gravel bed



Bitumen sheeting with rubber decoupling



Sealing membrane with rubber decoupling

- Dimpled base ensures ideal drainage of water
- Edge and corner pieces available as accessories
- Height Adjustment Discs allow millimetre precision
- Special models available for fixing wood or profiles
- Combinable with VOLFI Stackable Supports & Pedestal System via Combination Supports
- Also available as a practically invisible, transparent model
- Optional wall spacers ensure neat spacing around the edges
- VOLFI Uni Profiles used as fixed edgings are a tried-and-tested solution

Three joint heights (00, 10 or 19 mm)

Eight joint widths (0, 2, 3, 4, 5, 6, 8 or 10 mm)



WK-U 4/10 with 4 lugs, set in KT-N (8% self-levelling)



TK-U 3/10 with 4 lugs, made of transparent plastic



WK-L for fixing wood or profiles

Data sheet



Downloads: 03.01-01
www.volfi.de

Volker Fischer

VOLFI Systems for state-of-the-art slab laying

VOLFI Basic Support, Rubber-coated

For easy slab laying with decoupling and reduced footfall sound, 10 mm added height



Solid, level substrates



Gravel bed



Bitumen * sheeting



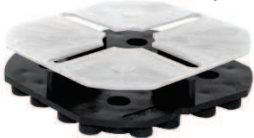
Sealing membrane

- Dimpled base ensures ideal drainage of water
- Can be cut along the integrated cutting grooves using a Stanley knife
- High-quality rubber-coated plastic reduces footfall sound
- Height Adjustment Discs allow millimetre precision
- Combinable with Combination Paving Supports by slightly cutting into the support
- Prefabricated supports available with T joints for stretcher bond
- Also available without lugs for supporting large plate formats (see data sheet)
- Optional wall spacers ensure neat spacing around the edges
- VOLFI Uni Profiles as fixed edgings are a well proven solution

Three joint heights (00, 10 or 19 mm)

Eight joint widths (0, 2, 3, 4, 5, 6, 8 or 10 mm)

*Please note that the dimpled base can press into the bitumen sheeting, which is why we recommend placing rubber-coated discs, such as GK-UA, beneath the base



GK-U 4/10 with 4 lugs and GK-UA 2.0



GK-U 0/00 with no lugs

Data sheet



Downloads: 03.06-01
www.volfi.de

Volker Fischer

VOLFI Systems for state-of-the-art slab laying

VOLFI Disc- and Plate-Spacers, Rubber-coated

Ideal for laying slabs on solid, level substrates or for decoupling + raising the slabs



Solid, level substrates



Gravel bed



Bitumen sheeting *



Sealing membrane

- For footfall sound reduction, decoupling, slip prevention and increasing the height
- For laying slabs on existing level/hard substrates (e.g. tiled surfaces)
- Joint pattern well secured thanks to widely spaced positioning lugs
- Prefabricated supports available with I joints for edge slabs and with T joints for stretcher bond
- Available with flat or dimpled base (*dimpled base not recommended for bitumen sheeting)



VS-GKUT 2/10 with 3 lugs



VP-GKU 4/10 with 4 lugs



VS-GKUI 2/10 with 2 lugs



VP-GKU 0/00 without lugs

Data sheet



Downloads: 04.07-01
www.volfi.de

Volker Fischer

VOLFI Systems for state-of-the-art slab laying

VOLFI Disc- and Plate-Spacers, Rubber-coated

- Joint widths from 2 to 8 mm are possible (also in combination with FK-B/FK-BT Cross Spacers set in VOLFI Plates)
- Can be cut along the integrated cutting grooves using a Stanley knife
- As a decoupling base element for all VOLFI Stackable Supports, ZR-V 4-Corner adjustable Pedestals, TL-V and other VOLFI system components
- Optional wall spacers ensure neat spacing around the edges
- VOLFI Uni Profiles used as fixed edgings are a tried-and-tested solution

Extra-large diameter for secure fixing of the slabs: 140 mm

Three base plate heights (2 or 5 mm, or 10 mm with dimpled base)

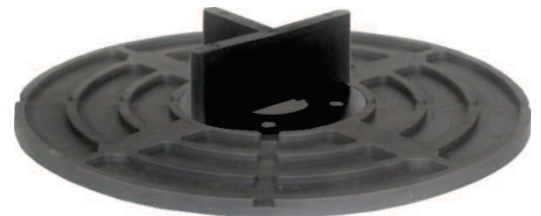


*VT-U20 4/10 with 4 lugs,
20mm added height*

*VT-B 4/10 with 4 lugs,
15mm added height*

*VT-U50 4/10 with 4 lugs,
50mm added height*

VS-GKU 2/10 with 4 lugs



*VP-GKU 0/00 with FK-BT 3/22-50
T Spacer set in*



VPN-GKU 4/10, VOLFI Plate with dimpled base

Data sheet



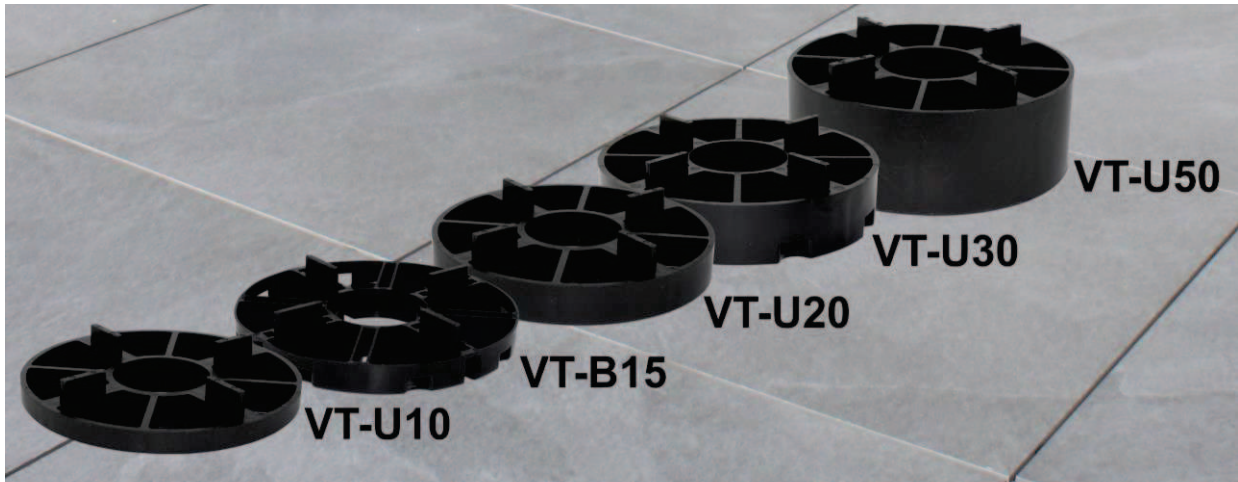
Downloads: 04.08-01
www.volfi.de

Volker Fischer

VOLFI Systems for state-of-the-art slab laying

VOLFI Stackable Support

For laying slabs on solid, level substrates, for heights of up to 250 mm



Solid, level substrates



Gravel bed



Bitumen sheeting with rubber decoupling



Sealing membrane with rubber decoupling

- Installation heights possible with five elements (up to 250 mm)
- Joint widths can be changed by combining with VOLFI FK-B Cross Spacers or VOLFI KT Combination Paving Supports with various VOLFI Basic Supports
- Edge slabs can be laid using prefabricated VOLFI VT-B Supports with I joints, and T joints are available for stretcher bond
- To decouple the VOLFI Stackable Supports from the substrate, we recommend placing them on the VOLFI VP-GKU Plate, the VOLFI VS-GKU Disc or the BP-GKU Base Plate with positioning lugs 4/10 mm
- For a larger and more stable bearing area, with a diameter of 210 mm, the BP-C Base Plate is suitable
- Fine adjustment of the height can be achieved using a VOLFI VT-A Disc (1 mm or 2.5 mm) on or under the Support



VT-U20 with VT-B, VT-U50 and VP-GKU 4/10 for decoupling



2x VT-B with 1.0 mm ring inserted

Data sheet



Downloads: 04.05-01
www.volfi.de

Volker Fischer

VOLFI Systems for state-of-the-art slab laying

VOLFI Stackable Support

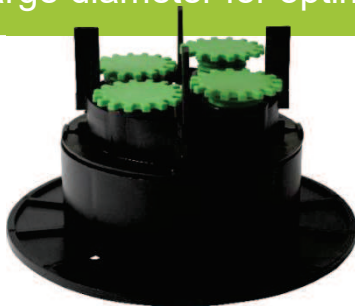
- All VOLFI Stackable Supports can be used to increase the height of VOLFI ZR-V 4-Corner adjustable Pedestals and KT + KT-N Combination Paving Supports (see data sheet)
- The height of TL-V / RT-V Twist Pedestals can be increased using VOLFI Stackable Supports
- The VOLFI Stackable Support is used to raise and support drainage channels that are 150 mm wide or wider
- The height of VF Uni Profiles and WD-Z Wall Connection Profiles can also be raised
- Optional wall spacers ensure neat spacing around the edges
- VOLFI Uni Profiles used as fixed edgings are a well proven solution

Four installation heights (10, 15, 20, 30 or 50 mm)

Large diameter for optimised bearing area: 140 mm



VT-B with KT-N Combination Paving Support (8% self-levelling) and WK-U 4/19



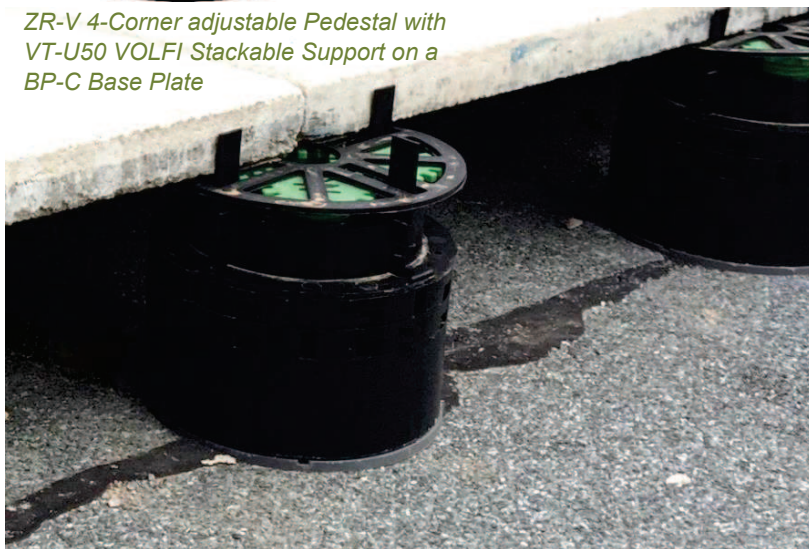
ZR-V 4-Corner adjustable Pedestal with VT-U50 VOLFI Stackable Support on a BP-C Base Plate



FK-BT set into VT-B



RT-V in combination with VT-B, Screw-in Aid Light



Example: VT-U50 and VT-B with ZR-V, VT-A and VP-GKU

Data sheet



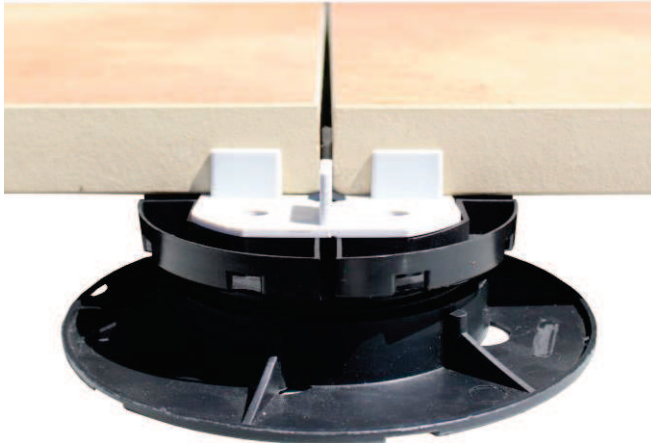
Downloads: 04.06-01
www.volfi.de

Volker Fischer

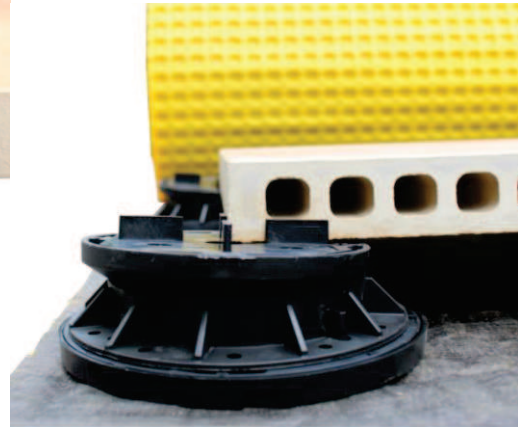
VOLFI Systems for state-of-the-art slab laying

VOLFI Combination Paving Support

Universal Adapter between VOLFI Stackable Support or Twist Pedestal and VOLFI Basic Supports



KT Combination Paving Support



KT-N Combination Paving Support (8% self-levelling)



Solid, level substrates



Gravel bed



Bitumen sheeting with rubber decoupling



Sealing membrane with rubber decoupling

- Available as KT Combination Paving Support (rigid) or with up to 8% self-levelling as KT-N
- Can be used only in conjunction with VOLFI Basic Support
- More than 60 different joint versions possible by inserting VOLFI Basic Supports (see data sheet)
- The installation efficiency remains constant whatever the version, since only the paving support is changed
- Allows joint width variation in the entire VOLFI System
- Can be stacked on VOLFI Stackable Supports for greater height
- Optional wall spacers ensure neat spacing around the edges
- VOLFI Uni Profiles as fixed edgings are a well proven solution



VT-U50 4/10 and KT-N with WK-U 4/10

Data sheet



Downloads: 04.01-01
www.volfi.de

Volker Fischer

VOLFI Systems for state-of-the-art slab laying

VOLFI Combination Paving Support

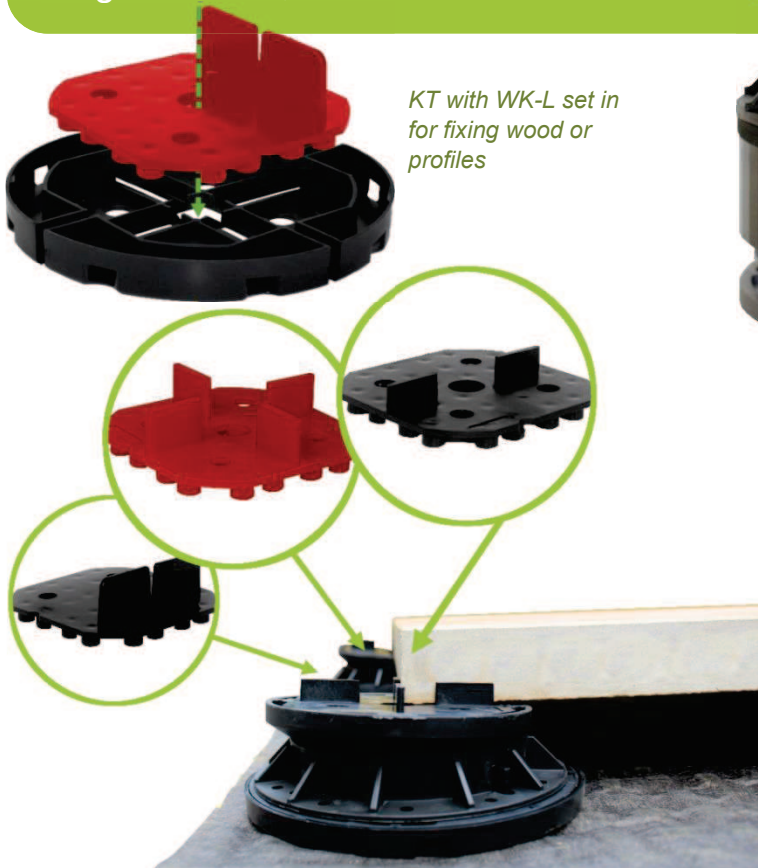
- Continuously adjustable height if set on an TL-V Pedestal (observe the assembly instructions)
- Simple, cost-effective, level-adjustable system by combining the KT-N with the TL-V Pedestal
- A minimum slab weight of 40 kg/m² is required for self-levelling
- For decoupling from the substate, the VOLFI Plate VP-GKU 0/00 Ø 140 mm or BP-GKU 0/00 Ø 210 mm with rubber-coating is recommended
- At the edge areas, a VOLFI Basic Support with two positioning lugs is inserted, e.g.: WK-UI

KT:

Height: 15 mm, diameter: 140 mm

KT-N:

Height: 35 mm, diameter: 140 mm



*KT with WK-L set in
for fixing wood or
profiles*

KT-N with >60 available joint versions



*KT-N with
WK-U 4/19*

TL-V45

*VP-GKU
4/10*

Data sheet



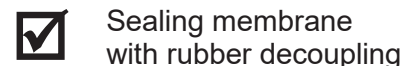
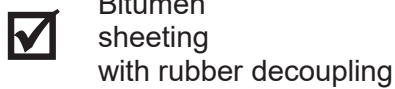
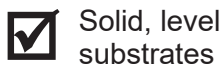
Downloads: 04.10-01
www.volfi.de

Volker Fischer

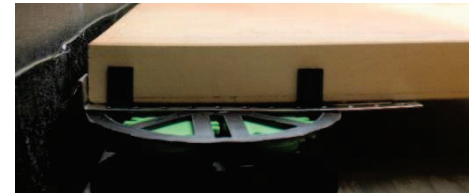
VOLFI Systems for state-of-the-art slab laying

ZR-V 4-Corner adjustable Pedestal

Quick and easy slab laying outdoors



- Integrated screw lock mechanism means no additional cross spacers are required
- Each support point can be adjusted separately
- Falls of up to 5% can be compensated for
- For all slabs with joints wider than 4 mm, subsequent fine adjustments can be made through the joint.
- Can be combined with VOLFI System components for heights of up to 260 mm
- The lugs can be removed using diagonal cutters, for laying edge and corner slabs
- Optional wall spacers ensure neat spacing around the edges
- VOLFI Uni Profiles as fixed edgings are a tried-and-tested solution
- Rough cogwheel adjustments can be quickly achieved using the optional Screw Adapter, which can be clamped into standard cordless screwdrivers (see data sheet)
- Eight screw holes for permanent installation



ZR-V with VT-A and with WAE-K Wall Spacer



Screw Adapter for ZR-V

Data sheet



Downloads: 05.02-01
www.volfi.de

Volker Fischer

VOLFI Systems for state-of-the-art slab laying

ZR-V 4-Corner adjustable Pedestal

- 400 kg (880lb) maximum load per corner (screw)
- VOLFI VT-A Ring or GK-UA Disc can be used for footfall sound insulation
- Stacking on top of VOLFI VT-B and VT-U Paving Supports is possible up to a height of 260 mm
- For improved load distribution and a more stable footing for installation heights from 150 mm, the BP-C Base Plate with click system \varnothing 210 mm is recommended
- Low weight combined with excellent stability
- Minimum stock required to cover maximum range of applications
- Also available made of fire-resistant plastic



ZR-V on VT-U50 and BP-C

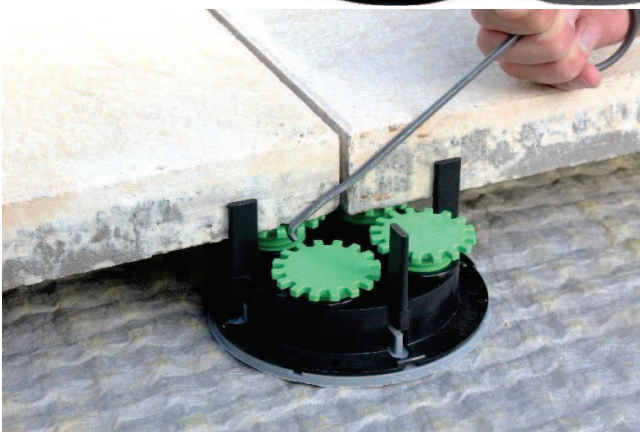
Adjustment of the main body: 35 – 50 mm (up to 260 mm with accessories)

Six joint widths (0, 2, 3, 4, 5 or 6 mm)

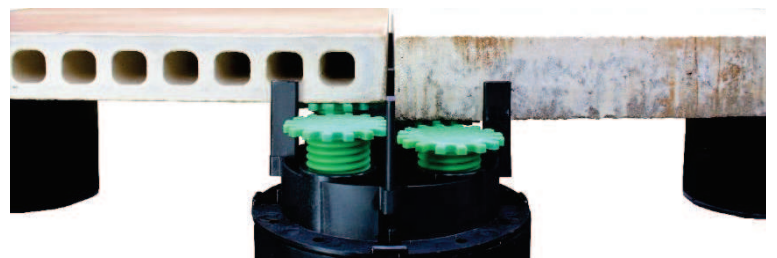
Diameter: 140 mm; can be extended to 210 mm with accessories



ZR-V with Screw Adapter and various combinations/heights



ZR-V fine adjustment through joint



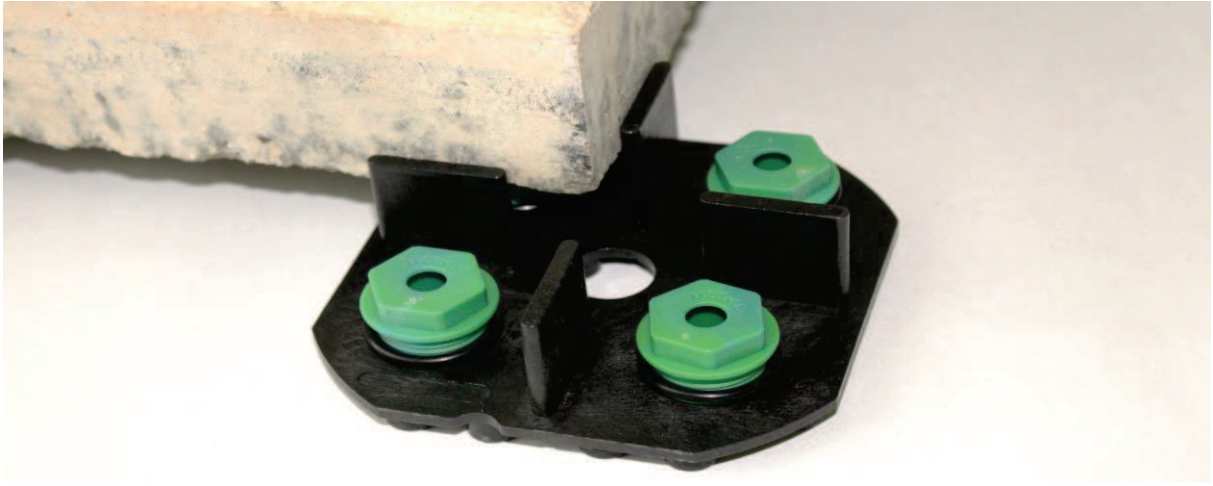
Example: ZR-V with VT-U

Volker Fischer

VOLFI Systems for state-of-the-art slab laying

SKT-V Screw-adjusted Pedestal

Ideal for laying slabs outdoors without additional height adjustment discs



Solid, level substrates



Gravel bed



Bitumen sheeting with rubber decoupling



Sealing membrane with rubber decoupling

- Each support point can be adjusted separately using an SW19 socket spanner
- Can be inserted into the Combination Paving Support (KT) and combined with VOLFI Stackable Supports, VOLFI Discs, VOLFI Plates or TL-V Twist Pedestals
- Can be divided to create edge and corner pieces
- Low weight combined with excellent stability
- 400 kg (880lb) maximum load per pedestal (see data sheet)
- Optional wall spacers ensure neat spacing around the edges
- VOLFI Uni Profiles as fixed edgings are a well proven solution



SKT-V set into KT with VP-GKU beneath for decoupling

Adjustment range: 20 – 25 mm (extendable with accessories)

Diameter: 95 mm



SKT-V adjustable with SW19 socket spanner

Data sheet



Downloads: 05.01-01
www.volfi.de

Volker Fischer

VOLFI Systems for state-of-the-art slab laying

SK-VS Twist Pedestal

Continuously adjustable pedestal for heights of at least 10 mm



Solid, level substrates



Gravel bed



Bitumen sheeting with rubber decoupling



Sealing membrane with rubber decoupling

- Subsequent fine adjustment is possible through the 4-mm joint, using the Premium Plus Adjustment Key (see data sheet)
- Various joint widths possible by combining with Combination Paving Support and VOLFI Basic Support (+15 mm height)
- The lugs can be removed for laying edge and corner slabs
- Further heights are possible by combining with VOLFI Stackable Supports + Rings
- A VOLFI Disc- and Plate-Spacer, Rubber-coated and without lugs, can be used below the pedestal to decouple it from the substrate
- Optional wall spacers ensure neat spacing around the edges
- VOLFI Uni Profiles as fixed edgings are a well proven solution



SK-VS 402 with VT-B for added height, with Premium Adjustment Key.

Diameter: 150 mm

Adjustment range: 10 -25 mm (two or three parts)

Increased height possible with accessories

Data sheet



Downloads: 06.01-01
www.volfi.de

Volker Fischer

VOLFI Systems for state-of-the-art slab laying

VOLFI premium Twist Pedestal TL-V

Continuously adjustable pedestal support for easy laying of dimensionally accurate slabs



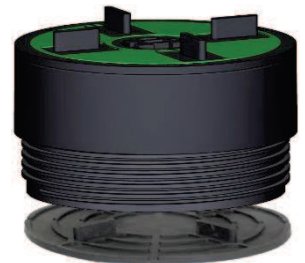
Solid, level substrates

Gravel bed

Bitumen sheeting with rubber decoupling

Sealing membrane with rubber decoupling

- Integrated locking mechanism
- Subsequent fine adjustment is possible through the joint (min. width 4 mm), using the Premium Plus Adjustment Key
- Three-part unit with rubber-coated joint-positioning plate (extra-large diameter of Ø 140 mm)
- Joint pattern well secured thanks to widely spaced, robust and long positioning lugs
- Can be combined with each other and VOLFI System components for installation heights of up to 400mm
- Prefabricated joint-positioning plates available with I joints for laying corner slabs and with T joints for stretcher bond
- For decoupling from the substrate, the VOLFI Plate VP-GKU 0/00 Ø 140 mm or BP-GKU 0/00 Ø 210 mm with rubber-coating is recommended
- Can be combined with KT-N Combination Paving Support and VOLFI Basic Support to compensate for a substrate gradient of up to 8%



TL-V with VP-GKU 4/10 beneath for decoupling

TL-V with KT-N Combination Paving Support (self-levelling)



Data sheet



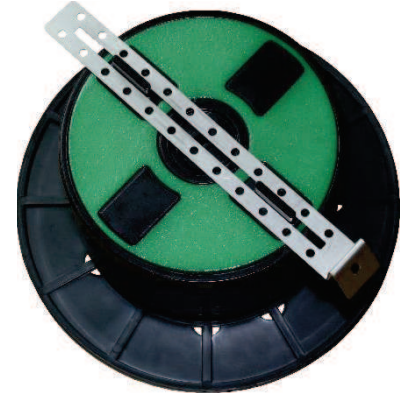
Downloads: 06.05-01
www.volfi.de

Volker Fischer

VOLFI Systems for state-of-the-art slab laying

VOLFI premium Twist Pedestal TL-V

- For improved load distribution and a more stable footing for installation heights from 150 mm, the BP-C Base Plate with click system Ø 210 mm is recommended
- Optional wall spacers ensure neat spacing around the edges
- VOLFI Uni Profiles as fixed edgings are a tried-and-tested solution
- Minimum stock required to cover maximum range of applications
- Also available made of fire-resistant plastic



TL-V with BP-C Base Plate and wall spacer WAE-K

Eight joint widths (0, 2, 3, 4, 5, 6, 8 or 10mm)
Adjustment range: 20 – 400 mm (in seven sizes)
Diameter: 140 mm



Several different heights are possible, up to 400mm



VOLFI TL-V can be used to install VOLFI Drainage Channels



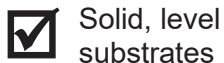
One can choose between 22 different joint-positioning plates

Volker Fischer

VOLFI Systems for state-of-the-art slab laying

VOLFI Premium Edging Profile

Extra-sturdy profile used as paving edging, gravel stop profile or green roof edging



Solid, level substrates



Gravel bed

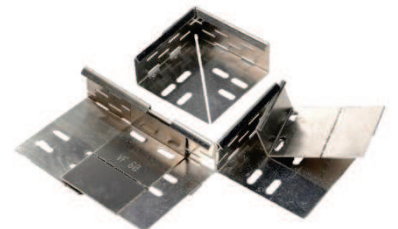


Available individually



System corners and connectors

- Ideal as a high-quality gravel stop profile, paving edging or attractive border (e.g. around green roof areas)
- Suitable for footpath, patio, concrete and ceramic slabs
- Held in place with slabs, if these are heavy enough; otherwise fix to the sealing membrane with dots of adhesive
- Extra-sturdy premium quality, proven over many years
- High-quality aluminium with stainless-steel look
- Also available in stainless steel (see data sheet)
- Accessories: Inside connectors for stabilisation, variable outside corners or inside corners for forming neat corners, and cover profiles for facing the visible edges of the bedding material

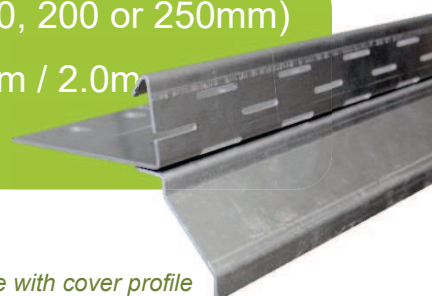


Inside corner, outside corner, connector

Eight heights (40, 60, 80, 100, 125, 150, 200 or 250mm)

Width/thickness/length: 140mm / 2.0mm / 2.0m

Slotted holes 26 x 3mm



Edging Profile with cover profile

Data sheet



Downloads: 07.01-01
www.volfi.de

Volker Fischer

VOLFI Systems for state-of-the-art slab laying

L-shaped Profile

Inexpensive L-shaped profile used as edging for paving or as a gravel stop profile



Solid, level substrates



Gravel bed

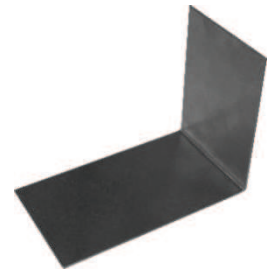


Available individually



System corners and connectors

- Ideal as a simple gravel stop profile, paving edging or attractive border (e.g. around green roof areas)
- Suitable for footpath, patio, concrete and ceramic slabs
- For stabilising slabs, e.g. on pedestals
- Material: Aluminium, natural (see data sheet)
- Accessories: Inside connectors for stabilisation and outside corners of all heights for the formation of neat corners

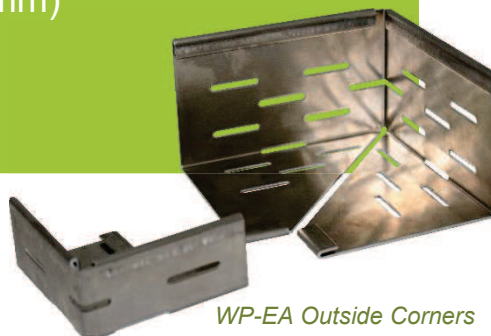


WP-V Connector

Both sides can be used, in three sizes (15/25, 35/50, 70/90 or 110/140 mm)

Thickness/length: 1.5 mm / 2.0 m

Slots 26 x 3 mm



WP-EA Outside Corners

Data sheet



Downloads: 07.02-01
www.volfi.de

Volker Fischer

VOLFI Systems for state-of-the-art slab laying

Gravel Stop Profile Light

For low loading conditions, light gravel fill and a neat edging for the paving



Solid, level substrates

Gravel bed

Available individually

System corners and connectors

- Used as a simple gravel stop profile, paving edging or border and for an attractive finish
- Suitable for footpath, patio and concrete slabs
- Weather-resistant special aluminium, natural
- Both sides can be used (see data sheet)
- Cost-effective product for DIY

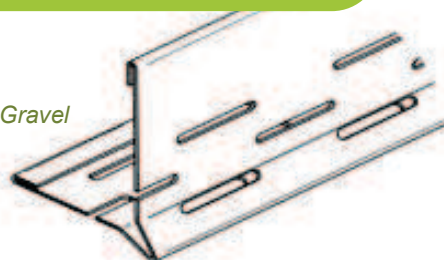
Two heights/widths (40/60 or 80/100 mm)

With fold: approx. 10/10 mm

Thickness/length: 1.0 mm / 2.0 m

Slots 26 x 3 mm

Sketch showing KFL Gravel Stop Profile Light



Data sheet



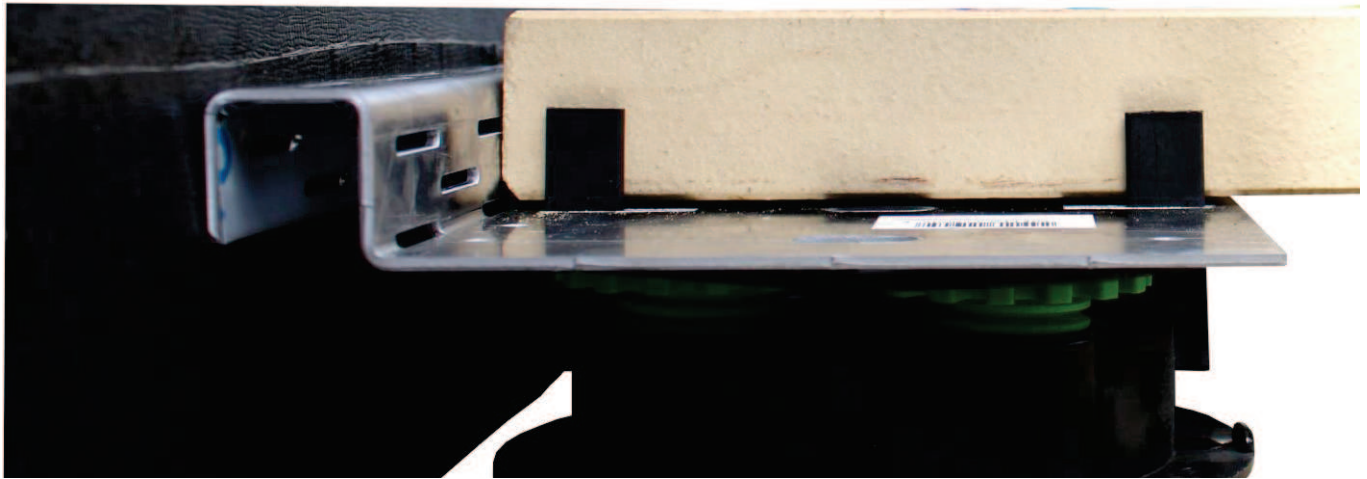
Downloads: 07.03-01
www.volfi.de

Volker Fischer

VOLFI Systems for state-of-the-art slab laying

Wall Connection Drainage Profile

For draining surface water from the paving

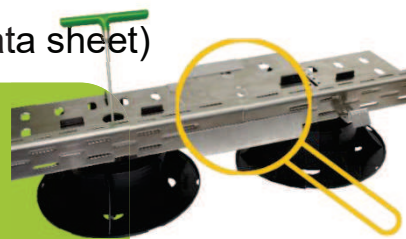


- ✓ Solid, level substrates
- ✓ WD-C for gravel bed
- ✓ WD-Z continuously variable in the VOLFI System
- ✓ Sealing membrane with rubber decoupling

- For a neat edging with uniform joint and drainage adjacent to walls and masonry parapets
- Slim drainage grating for optimal water discharge
- Available as C or Z profile
- WD-Z can be combined with the entire VOLFI System and continuously adjustable up to 400 mm height depending on version
- WD-C for use in gravel bed or on solid, level substrates for connecting WD-C 20 and 25 mm
- Specific lengths possible by cutting, e.g. with a band saw
- Accessories: WD-V Connector (see data sheet)



Three widths (25 or 45 mm)
Three heights (17 or 47 mm)
Length: 2.0 m and slots: 26 x 3 mm
Thickness: 2.0 mm special aluminium



WD-Z connected with WD-V

Data sheet



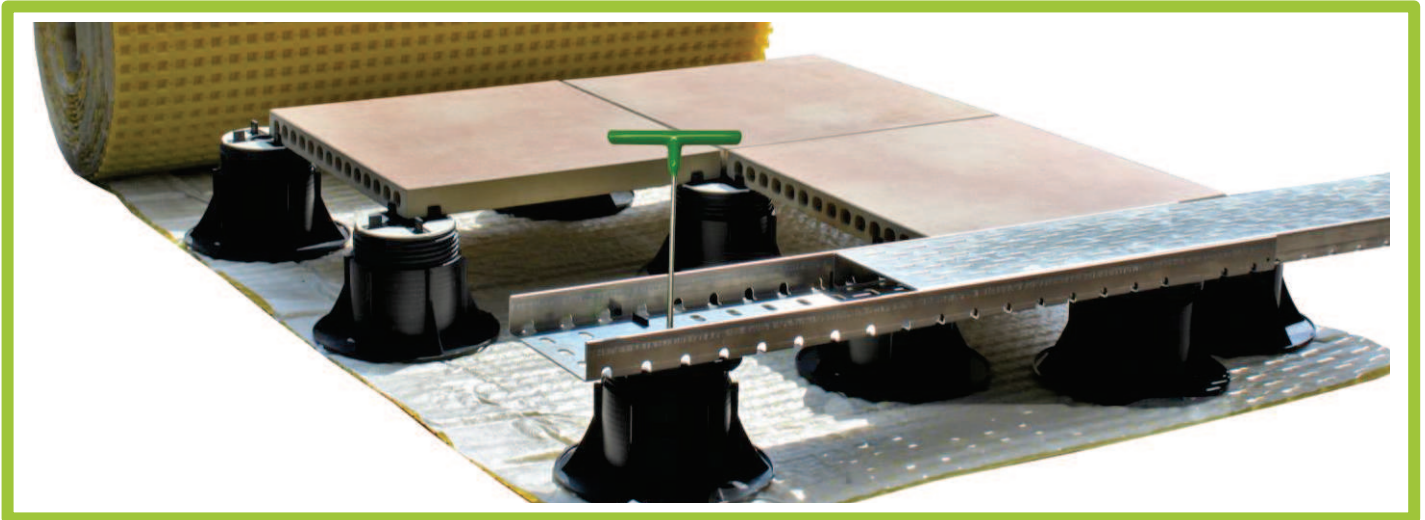
Downloads: 07.04-01
www.volfi.de

Volker Fischer

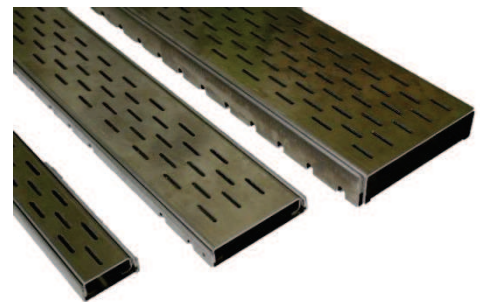
VOLFI Systems for state-of-the-art slab laying

Drainage Channels

To drain surface water away into the water-draining layer

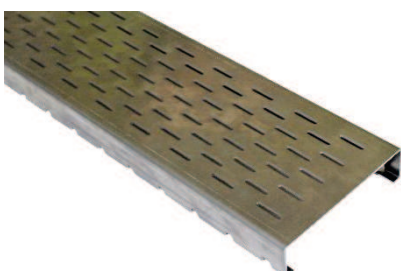


- The VOLFI Box Channel (100 or 150 mm wide) with drainage grid can be adjusted to the paving height using pedestals
- Continuously adjustable height from 17 to 320 mm (using accessories)
- The VOLFI Adjustment Key or Screw-in Aid can be used to adjust the height after the channel has been laid
- Can be set on edge as an edging strip (e.g. as a cable duct)
- Also available as a stainless-steel grille MW 30/10 or stainless-steel bar grating (bars 12 x 3 mm), 1 m in length



Channels with various widths/heights

Selection of drainage grids for box channels:



Slotted aluminium drainage grid



Stainless-steel grille



Stainless-steel bar grating

Data sheet



Downloads: 08.01-01
www.volfi.de

Volker Fischer

VOLFI Systems for state-of-the-art slab laying

Drainage Channels

- Weather-resistant special aluminium
- Can be cut to length using a professional band saw
- Accessories: Connector, for connecting several drainage channels together; End Plates, for closing off the ends of the channel

Thickness/length: 2 mm / 2.0 m and slots 26 x 3 mm

Drainage grid:

Three widths (42, 92, 142 or 242 mm)

Two heights (15 or 35 mm)

Box Channel, no slots:

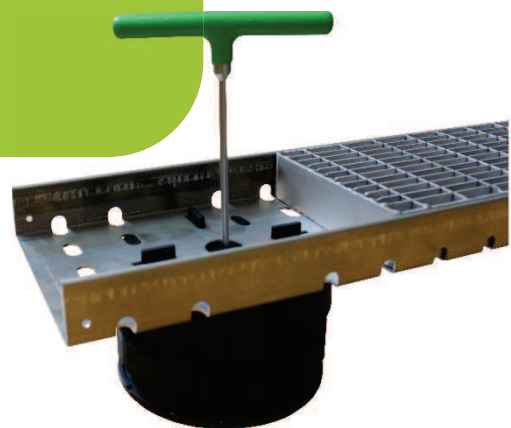
Three widths (50, 100, 150 or 250 mm)

Two heights (17 or 37 mm)

Box Channel, slotted:

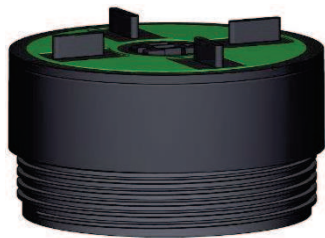
Three widths (100, 150 or 250 mm)

Two heights (17 or 37 mm)



Place the Box Channel over the lugs of the VOLFI TL-V; set the height using Adjustment Key; fit the Drainage Grid

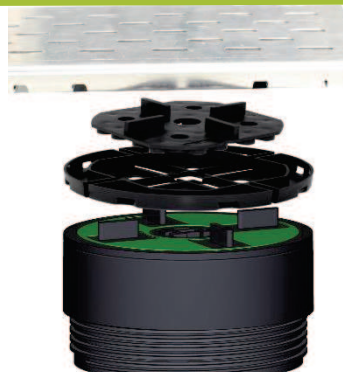
Assembly of Drainage Channel, 150 mm



Assembly of Drainage Channel, 100 mm



Step 1: Set KT with WK-U insert on TL-V



Step 2: Place the Box Channel over the positioning lugs of the WK-U; set the height using an Adjustment Key; fit the Drainage Grid

Data sheet



Downloads: 08.02-01
www.volfi.de

Volker Fischer

VOLFI Systems for state-of-the-art slab laying

DR-AF Drainage Grid, Slotted

To support drainage of surface water



- Drainage channel that rests firmly on a solid substrate; for use without paving supports
- Rounded slots for optimal drainage of large quantities of water
- Weather-resistant special aluminium
- Also available in stainless steel
- Without box channel (see data sheet)
- Accessories: Drain Plate, Uni Floor Drain

Width/height: 100/20 mm

Thickness/length: 2 mm / 1.0 m

Slots: 20 x 10 mm



DR-AF Drainage Grid, BA-K Floor Drain and DP-AF Drain Plate

Data sheet



Downloads: 08.03-01
www.volfi.de

Volker Fischer

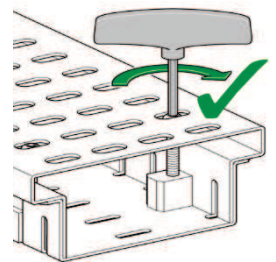
VOLFI Systems for state-of-the-art slab laying

DR-AV adjustable Drainage Grid, Slotted

For draining surface water from the paving



- Drainage channel that rests firmly on the substrate; for use without paving supports or with gravel bed
- Rounded slots for optimal drainage of large quantities of water
- Subsequent height adjustment possible via screws set in aluminium threaded blocks, using the Screw-in Aid
- Weather-resistant special aluminium
- Also available in stainless steel (see data sheet)
- Accessories: DR-AVE Corner Piece for neat corners; Connectors for stabilisation; End Plate for attractive closure of channel ends; and GU-AV Drainage Gully



Sketch showing height adjustment of drainage channel

Drainage grid:

Lengths: 1 m

Two widths (100 or 140 mm)

Thickness: 2 mm

Continuously adjustable from: 30 – 50 mm or 60 – 95 mm



Prefabricated corners available



GU-AV Drainage Gully

Data sheet



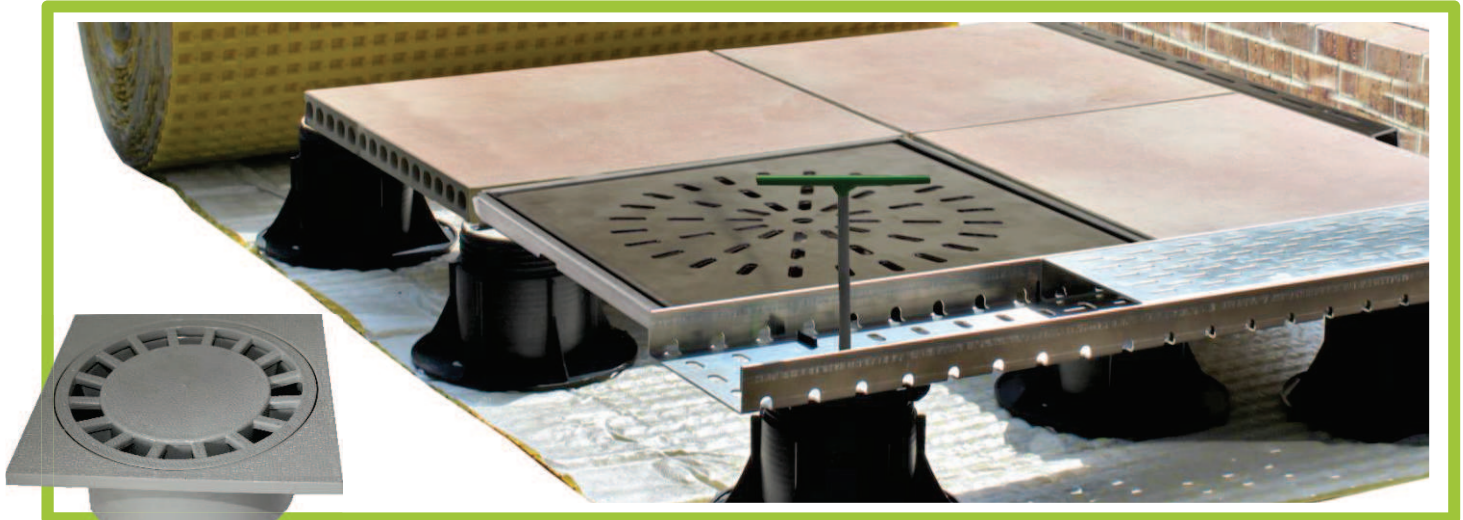
Downloads: 08.04-01
www.volfi.de

Volker Fischer

VOLFI Systems for state-of-the-art slab laying

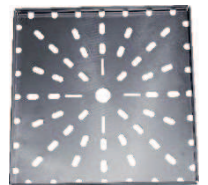
Drainage Gully/Plate

For draining surface water from the paving



Optional accessories: BA-K Uni Floor Drain with odour trap 200x200 mm (height: 135 mm)

- Can be laid on top of existing floor drains, in combination
- Continuous height adjustment possible using VOLFI System pedestals (40 – 420 mm plus Gully/Plate combination)
- Weather-resistant special aluminium
- DP-AF 284 mm fits the DP-F inspection chamber



Base section of DP-GU Drainage Gully



DP-AF Drain Plate upper section



Upper section of Drain Plate GR-E Grille

DP-GU Drainage Gully:

Two sizes (200 x 200 or 293 x 293 mm)

Two heights (14 or 20 mm)

Thickness: 2 mm

DP-AF Drain Plate:

Two sizes (191 x 191 or 284 x 284 mm)

Two heights (14 or 20 mm)

Thickness: 3 mm

GR-E Stainless-steel Grille:

Four sizes (191 x 191, 284 x 284, 400 x 400, 400 x 600, 600 x 600 or 1.000 x 500 mm)



Drainage Gully with Drain Plate, fitted on VT-U

Data sheet



Downloads: 08.06-01
www.volfi.de

Volker Fischer

VOLFI Systems for state-of-the-art slab laying

Drainage Mat DRM

Ideal for the controlled drainage of surface water beneath paving



Solid, level substrates



Below a gravel bed



Bitumen sheeting



Sealing membrane

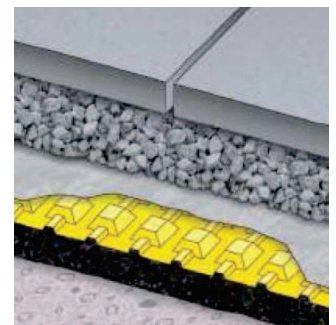
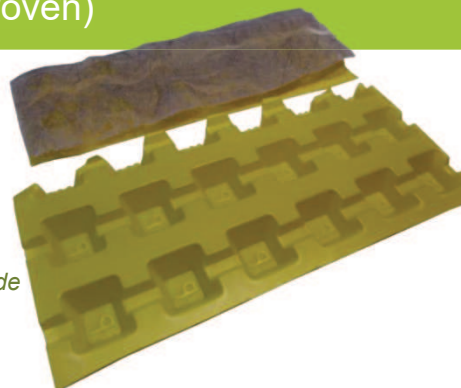
- Ideal drainage of water thanks to ridge between dimples
- For permanently reliably drainage
- Heat-insulation & footfall sound reduction
- Also suitable for foundation wall protection and gravel bed
- Extra-sturdy and load-bearing thanks to square dimples
- Polypropylene with nonwoven fabric

Dimensions: 100 cm x 15 m roll

Dimple height: 7 mm (+ nonwoven)

Top side

Underside



*Illustration:
Laid with gravel bed*

Data sheet



Downloads: 09.01-01
www.volfi.de

Volker Fischer

VOLFI Systems for state-of-the-art slab laying

Inspection chamber

Inspection chamber with various covers – for universal use



- Several units can be stacked and the sealed base can be cut out
- Can be walked on. Large selection of covers.
- Combinable with DP-AF Drain Plate (aluminium) and GR-E Grille (stainless-steel)
- Pipe connections can be sawed out to fit all standard pipe diameters
- For good water flow and larger quantities of water, the inspection chamber can be combined with the BA-K Uni Floor Drain via a pipe connection at the side

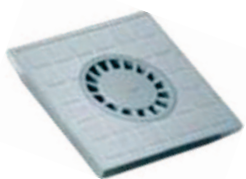
Dimensions:

Outside: 300 x 300 mm

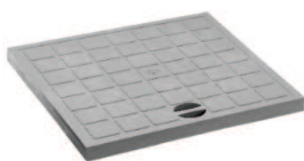
Inside: 285 x 285 mm

Height: 300 mm

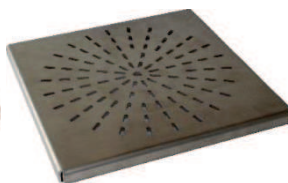
Covers for inspection chamber:



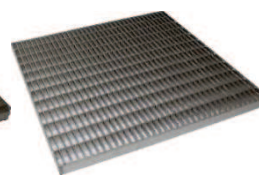
Plastic with odour trap



Plastic, closed surface



Aluminium, slotted



*Stainless steel
MW 30x10*

Data sheet



Downloads: 09.05-01
www.volfi.de

Volker Fischer

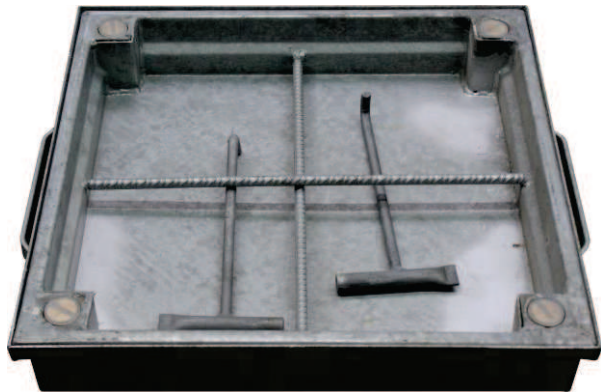
VOLFI Systems for state-of-the-art slab laying

Manhole Cover

As inspection cover for indoor and outdoor applications



Plastic Manhole Cover



Galvanised Manhole Cover (recessed)

Plastic

- Diameter: 600 mm
- **For pedestrian traffic:** Frame height 85 mm, dark grey
- **For vehicular traffic (lorry):** Frame height 116 mm, black

Aluminium

- Diameter: 600 mm
- **For pedestrian traffic:** Frame height 50 mm, anthracite grey

Galvanised

- **Recessed for filling:** 300 x 300 mm, 400 x 400 mm or 635 x 635 mm, max. fill depth: 75 mm, external dimensions +180 mm
- **Recessed for paving:** 600 x 600 mm, max. fill depth: 100 mm, external dimensions +100 mm

Stainless steel

- **Recessed for filling:** 635 x 635 mm, max. fill depth: 75 mm, external dimensions +180 mm
- **Recessed for paving:** 600 x 600 mm, max. fill depth: 100 mm, external dimensions +100 mm



Data sheet



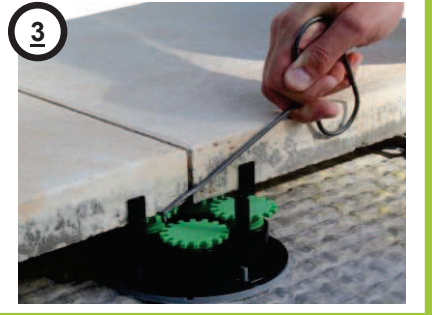
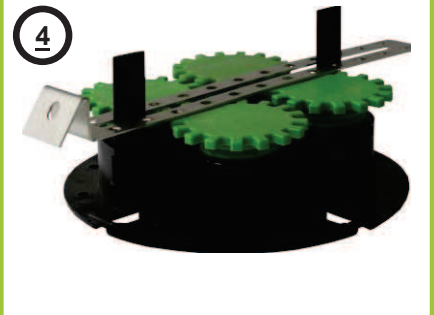




Downloads: 09.04-01
www.volfi.de

Volker Fischer

VOLFI Systems for state-of-the-art slab laying

Accessories for pedestals

<p>PREMIUM Adjustment Key</p>	<p>Screw-in Aid</p>	<p>Joint Rod/ Cleaning Rod, tempered</p>
		
<ul style="list-style-type: none"> • For continuously variable VOLFI Twist Pedestals • For turning and raising the pedestals • For fine adjustment of the height, by up to 5 mm after the slabs have been laid (for joint widths of at least 4 mm in stack bond) • Premium quality for extra stability; forged; rubber-coated grip 	<ul style="list-style-type: none"> • For continuously variable VOLFI Twist Pedestals • For turning and raising the pedestals without slabs on top • Galvanised steel with plastic grip 	<ul style="list-style-type: none"> • Adjustment aid for VOLFI ZR-V (for joints at least 4 mm wide) • Tempered steel • Also ideal for cleaning the joints • Cost-effective turning aid
<p>Universal Wall Spacer</p>	<p>Step Clip Set</p>	<p>Edge Support Angled Bracket</p>
		
<ul style="list-style-type: none"> • For creating uniform edge joints around the paving and for added stability • Slot for 4 mm lugs of VOLFI Pedestal Systems • Premium quality • Also used as a spacer for VOLFI Channels, Drainage Profiles, Uni Profiles and L-shaped Profiles 	<ul style="list-style-type: none"> • Comprises a top and bottom section to hold the slabs • For slabs up to 20 mm thick • Used for steps 	<ul style="list-style-type: none"> • Easy laying of edge slabs and cut slabs • For bridging gaps around the edges • Made of extra-strong 3 mm aluminium (L-shaped) • For placing on VOLFI Stackable Support with "I" joint

Volker Fischer

VOLFI Systems for state-of-the-art slab laying

Accessories for pedestals

Height Adjustment Disc, Rubber-coated



- Fits all VOLFI Basic Supports
- Made of rubber-coated plastic
- For precise height adjustment and footfall sound reduction
- Stackable, flexible and anti-slip
- Can be cut into halves/quarters
- Four thicknesses (1.0; 2.0; 2.5 or 3.0 mm)

Base plate, Rubber-coated



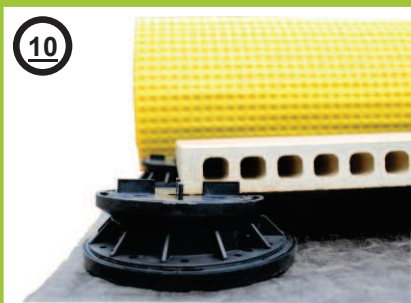
- Available with four positioning lugs 4/10 mm or without lugs
- Suitable for: decoupling/footfall sound insulation, increasing the bearing area, raising the height
- Diameter: 210 mm
- Thickness: 5 mm

Base plate/ Click System



- Available with four positioning lugs 4/10 or Click System
- Can be combined with VOLFI ZR-V and Stackable Supports
- For increasing the bearing area (better load distribution)
- Diameter: 210 mm
- Thickness: 5 mm

Combi Paving Support



- Adapter for VOLFI Basic Support
- Self-levelling or rigid versions
- Can be set on all adjustable SK-V/SK-VN pedestals, to achieve all standard joint widths
- Installation height KT: 15 mm
- Installation height KT-N: 35 mm

• More info on page 16-17

VOLFI Stackable Supports



- Up to five elements can be stacked
- All elements can be combined with each other
- Four installation heights (15, 20, 30 or 50 mm)

• More info on page 14-15

VOLFI Disc- and Plate-Spacers





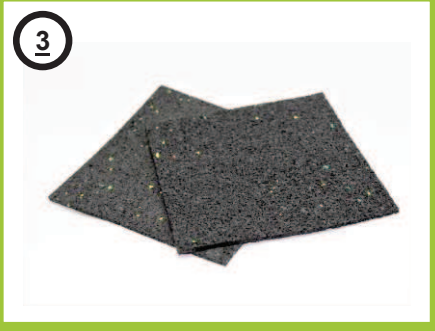
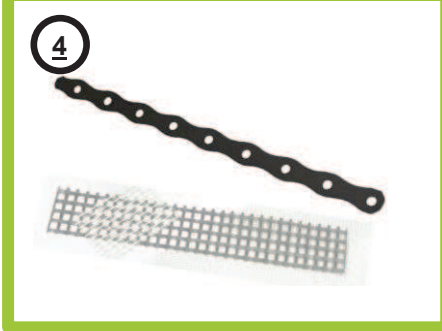
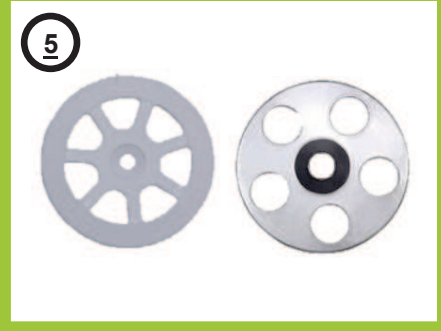
- Rubber-coated version suitable for footfall sound insulation/decoupling and increasing the height of ZR-V Pedestals and VOLFI Stackable Supports
- Available with or without two, three or four positioning lugs
- Installation height: 2 or 5 mm

• More info on page 12-13

Volker Fischer

VOLFI Systems for state-of-the-art slab laying

Assembly accessories

Woven Textile	Soft Rubber Roll	Soft Rubber Pad
<p>1</p>  <ul style="list-style-type: none">• Tested European quality goods• Non-slip• Alkali-resistant• For indoor and outdoor use• Dimensions: 100 cm x 50 m• Approx. 160 g/m²• Mesh size: 4 x 4 mm	<p>2</p>  <ul style="list-style-type: none">• Made of recycled granulated rubber• Stackable• E.g. for damping and decoupling from the substrate• Dimensions: 150 mm x 5 m, 3 mm thick 250 mm x 5 m, 4 mm thick	<p>3</p>  <ul style="list-style-type: none">• Made of recycled granulated rubber• Stackable• E.g. for damping and decoupling from the substrate• Dimensions: 125 x 125 mm, 3 or 10 mm thick
Punched Anchor Strip/ Wall Connector	Installation Plate	
<p>4</p>  <ul style="list-style-type: none">• Stainless steel or textile• Flexible• For interlocking and connecting masonry• E.g. for anchoring components made of plastic or metal• Dimensions: 300 x 20 x 0.5 mm (stainless steel) 380 x 80 mm (textile)	<p>5</p>  <ul style="list-style-type: none">• Material: plastic, stainless steel or galvanised steel• For use with commercially available screws• Dimensions: Plastic: 60/5 mm Metal: 35/5 mm	

Volker Fischer

VOLFI Systems for state-of-the-art slab laying

Assembly accessories

Stainless Steel Screw + Sealing Washer	Plastic Nail	Plastic Spacer Ring
 <p>6</p>	 <p>7</p>	 <p>8</p>
<ul style="list-style-type: none"> • Spengler screw for permanently fixing slabs, profiles or other construction components • Sealing washer: 15 mm with rosette • Diameter: 4.5 mm • Screws: 25, 35, 45, 55, 65, 80, 100, 120, 150 or 200 mm 	<ul style="list-style-type: none"> • For fixing lightweight slabs and anchoring embankment mats, for example, to the ground • Extra-robust packaging bag containing 250 pieces • Five sizes (75, 100, 125, 150 or 200 mm) 	<ul style="list-style-type: none"> • For 4-12 mm thick rods • Extra-robust packaging bag containing 100 pieces • Six sizes (20, 25, 30, 35, 40 or 50 mm spacing) • Other package sizes on request
Spacer Plates		Plastic Wedges
 <p>9</p>		 <p>10</p>
<ul style="list-style-type: none"> • Spacers for stacking concrete slabs • With hooks for easier removal • Dimensions: 40/90 mm hooks, 2 sides 		<ul style="list-style-type: none"> • Used as construction wedge, fixing aid, door stopper, assembly wedge, mini-wedge for window installation etc. • Two dimensions: 12 x 28- 70 mm 20 x 40- 100 mm

Slab laying

with the German manufacturer's excellent quality and many years of experience

Made in
Germany
quality

Volker Fischer

VOLFI systems
for state-of-the-art slab laying



Cross Spacers



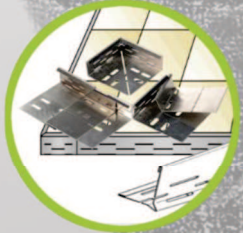
Slab Supports



4-Corner
adjustable Pedestal



Twist Pedestal



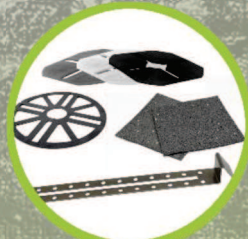
Edging Profiles



Drainage Channels



Drain-Elements



Accessories

Plant 2
Packaging and shipping



Plant 3
VOLFI logistics centre



info@volfi.de



www.volfi-systems.com



Your specialist distributor:

Volker Fischer

VOLFI systems for state-of-the-art slab laying

VOLFI Volker Fischer GmbH
57399 Kirchhundem, Germany