

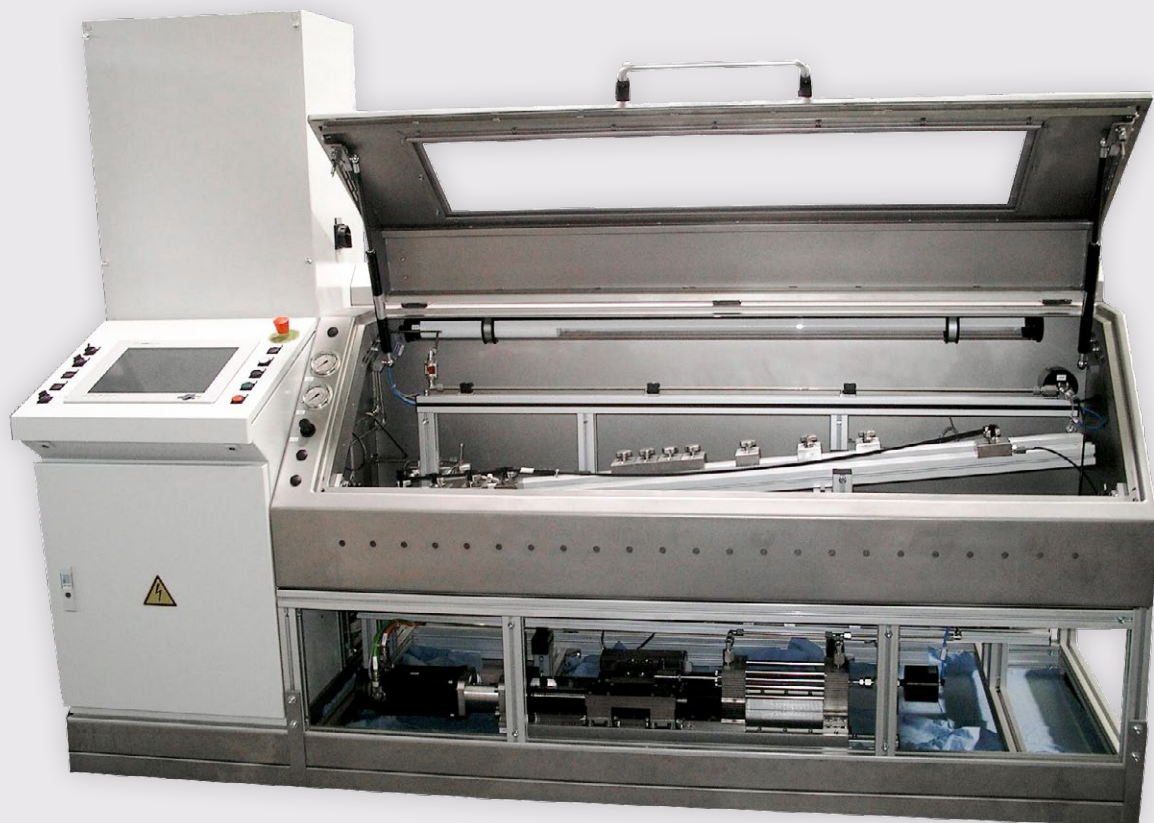
Perfection in fluids.

The right *flow*
by German engineering.



BLTB500 - Burst & Leakage Test Bench

Data Sheet EPE-147031



Made in
GERMANY



EPE-147031

BLTB500 - Burst & Leakage Test Bench



Made in GERMANY

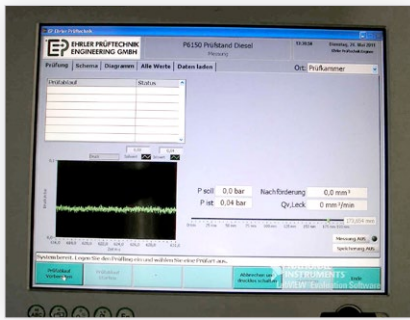


Test bench for pressures Testing up to 500 bar

Testing fuel return lines
High Pressure Controller HPC4000
Optional temperature

Description

The test bench is used to test fuel return pipes with diesel. The test pressure is between 1 and 500 bar overpressure. With an optional temperature cabinet tests at different temperatures will be realized. The system is controlled by a LabVIEW developed control software or SPS. The leakage rate of the test items are determined by the HPC4000 piston controller. The piston rod (Plunger) is moved by means of stepping motor and ball screw. By piston cross-section and travel distance, the leakage rate (= post-feed volume) will be determined.



Similar to Figure

Technical data

Overpressure at the test item	0..500 bar
Measurement uncertainty	± 0,1% FS
Temperature test item	-40..+200°C
Measurement uncertainty	1/3 class B
Be entered sizes	
Overpressure at the test item	1..500 bar
Deviation to ± 0.1% MW	
Pressure ramp	0.1..100 bars
Temperature	-50..+250°C
Depending on climatic cabinet	
Dimensions (without climatic chamber)	
Test system (L x W x H)	2600 x 800 x 2000 mm

Advantages

- ✓ Short change
- ✓ Custom design of operating pressure and flow
- ✓ Simple operation through intuitive software
- ✓ Compact and ergonomic design of the system
- ✓ Security monitored door with lifting assistance
- ✓ Custom test item adaption



Special Solutions

Application examples:



Automotive:

Leakage and bursting tests of braking and fuel pipes



Automation:

Leakage and bursting tests of hoses lines



Fluid- and valve technology:

Leakage measurement of valve body seats



This is only an **example** interpretation and is of course individually adaptable to your needs.



Top-Innovator 2016

For special requirements we are happy to advise you. Subject to change. / EPE-147031 / Last update: 04/2019 / V01
© EP Ehrler Prüftechnik Engineering GmbH, Wilhelm-Hachtel-Str. 8, D-97996 Niederstetten

TOP-INNOVATOR 2016: EP Ehrler Prüftechnik is one of the most innovative companies in the German SME segment.

+49 (0) 79 32 . 6 06 66 - 0 / +49 (0) 79 32 . 6 06 66 - 11 / info@ep-e.com / www.ep-e.com