

Gear Levers, Style C, metric

Item description/product images

METRIC
Parts



Description

Material:

Knobs Duroplast PF 31.

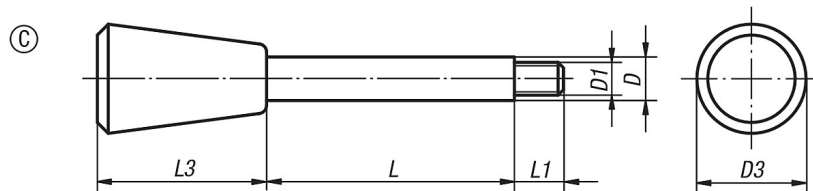
Rod steel 1.0718 or stainless steel 1.4305.

Version:

Duroplastic black, high-gloss polished.

Steel black oxide finish or stainless steel natural finish.

Drawings



| Item No. Steel | Item No. Stainless steel | | D | D1 | D3 | L | L1 | L3 |
|----------------|--------------------------|---|----|-----|----|----------------|----|----|
| K0179.408X | K0179.1408X | C | 8 | M6 | 20 | 35/50/65 | 9 | 30 |
| K0179.410X | K0179.1410X | C | 10 | M8 | 25 | 50/65/80/100 | 13 | 38 |
| K0179.412X | K0179.1412X | C | 12 | M10 | 30 | 65/80/100/125 | 15 | 46 |
| K0179.414X | K0179.1414X | C | 14 | M12 | 35 | 80/100/125/160 | 16 | 53 |