

Baureihe / Type 24

03 / 2007

2/2 Wege Magnetventil / zwangsgesteuert mit Kolben 2/2 way solenoid valve / lift-assisted piston

Funktion :

Ventil in Ruhestellung geschlossen (NC).
Der erregte Magnet öffnet eine Vorsteuerbohrung und hebt direkt oder unterstützt von der Druckdifferenz den Kolben vom Hauptsitz. Das Ventil schließt durch Federkraft.

No energized port P closed by spring return (NC).
This valve opens when the solenoid is energized.
This valve does not rely on a pressure-differential.



Technische Daten / technical data

Anschluss:	Flansch DN 15 - DN 100	connection:	flange
Einbaulage:	Nur mit stehendem Magneten	installation:	only solenoid upwards
Durchflussmedium:	neutrale, gasförmige und flüssige Medien	flow medium:	neutral, gaseous and liquid media
Viskosität:	22 mm ² / S	viscosity:	22 mm ² / S
Ventilgehäuse:	GG-25 .. /0401/..	valve housing:	cast iron .. /0401/..
Metall, Innenteile:	Messing und NIRO	metallic inner part:	brass and stainless steel
Anschlussspannungen:	AC 24, 42, 110, 220V 50Hz DC 24, 110, 196V	supply voltages:	AC 24, 42, 110, 220V 50Hz DC 24, 110, 196V
Leistungsaufnahme:	1322 / 3322 = 30 Watt 4242 / 5242 = 60 Watt 4272 / 5272 = 98 Watt 4352 / 5352 = 145 Watt	power consumption:	1322 / 3322 = 30 Watt 4242 / 5242 = 60 Watt 4272 / 5272 = 98 Watt 4352 / 5352 = 145 Watt
Einschaltdauer:	100 % - VDE 0580	operating factor:	100 % - VDE 0580
Umgebungstemperatur:	+35°C	ambient temperature:	+35°C
Schutzart:	IP 65 nach DIN 40050	enclosure:	IP 65 according DIN 40050
Kabelanschluss:	Gerätestecker DIN 43650 oder Klemmkasten	electric connection:	connection socket or terminal box

Baureihe Type	DN seat mm	KV flow rate m ³ / h	maximaler Druck bei Magnettype max. pressure regarding solenoid type						
			.322	.242	.272	.352	A532	A542	.522
D2401 / 0401 / ...	15	5,0	0-16	-	-	-	-	-	-
D2402 / 0401 / ...	20	11,0	0-16	-	-	-	-	-	-
D2403 / 0401 / ...	25	13,0	0-16	-	-	-	-	-	-
D2404 / 0401 / ...	32	28,0	0-10	0-16	-	-	-	-	-
D2405 / 0401 / ...	40	30,0	0-10	0-16	-	-	-	-	-
D2406 / 0401 / ...	50	46,0	-	0-16	-	-	-	-	-
D2407 / 0401 / ...	65	75,0	-	0-16	-	-	-	-	-
D2408 / 0401 / ...	80	97,0	-	0-16	-	-	-	-	-
D2409 / 0401 / ...	100	143,0	-	-	0-16	-	-	-	-
D2410 / 0401 / ...	125	240,0	-	-	0-16	-	-	-	-
D2411 / 0401 / ...	150	370,0	-	-	-	0-16	-	-	-
D2412 / 0401 / ...	200	625,0	-	-	-	-	0-16	-	-
D2413 / 0401 / ...	250	950,0	-	-	-	-	-	0-10	-
D2414 / 0401 / ...	300	1400,0	-	-	-	-	-	-	0-10

ACHTUNG: Dichtungskennziffer
Attention: seal-digit

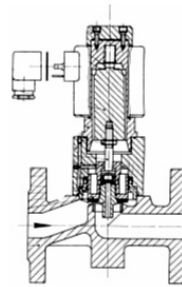
Dichtungskennziffer seal-digit	Dichtung seal	max. Temp. °C
01	NBR	80
02	FKM	80
04	PTFE	80
06	EPDM	80

Baureihe / Type 24

2/2 Wege Magnetventil / zwangsgesteuert mit Kolben 2/2 way solenoid valve / lift-assisted piston

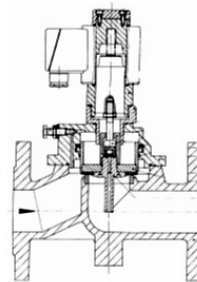
Weitere Ausführungen / optional extras

stromlos geöffnet = NO
 Stellungsanzeiger (Endschalter) = EH
 EX-Schutz EEx em II T4; Eex d II c T6
 Handbetätigung = HA
 Edelstahl ../0801/..
 regulierbare Schließdämpfung = SR
 Öl- und fettfrei = OF
 Temperatureausführung bis 180°C = TH
 Stahlguss PN 25/ PN 40 ../0501/..



Type
2401 - 2403

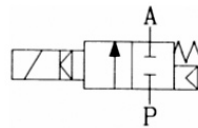
no energized open = NO
 position indicator (switch limit) = EH
 explosion proof EEx em II T4; Eex d II c T6
 manual reset = HA
 steel iron ../0801/..
 variable close muting = SR
 free of oil and grease = OF
 design for high temperature up to 180°C = TH
 cast steel PN 25 PN 40 ../0501/..



Type
2404 - 2409

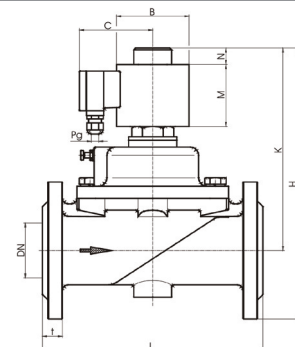
Schaltfunktion / function

NC = In Ruhstellung geschlossen
 normally closed



Maße / dimensions

Magnet solenoid	.242							A532		A542		
	2402	2403	2404	2405	2406	2407	2408	2411	2412	2412	2413	
Type	2402	2403	2404	2405	2406	2407	2408	2411	2412	2412	2413	2414
DN	20	25	32	40	50	65	80	150	200	200	250	300
B	77	77	77	77	77	77	77	140	140	170	170	200
C	82	82	82	82	82	82	82	120	120	140	140	160
H	257,5	262,5	288	293	306,5	362,5	415	700	730	750	782,5	830
K	205	205	218	218	224	270	315	560	560	580	580	600
L	150	160	180	200	230	290	310	480	600	600	730	850
M	70	70	70	70	70	70	70	-	-	-	-	-
N	20	20	20	20	20	20	20	-	-	-	-	-
t	16	16	16	16	18	18	20	26	26	26	34	38
PG	11	11	11	11	11	11	11	11	11	11	11	11
kg	7,5	8,5	11,0	13,0	14,0	35,0	44,0	125,0	138,0	156,0	215,0	300,0



Magnet solenoid	.322					.272						.352					
	2401	2402	2403	2404	2405	2404	2405	2406	2407	2408	2409	2410	2408	2409	2410	2411	2412
Type	2401	2402	2403	2404	2405	2404	2405	2406	2407	2408	2409	2410	2408	2409	2410	2411	2412
DN	15	20	25	32	40	32	40	50	65	80	100	125	80	100	125	150	200
B	63	63	63	63	77	105	105	105	105	105	105	105	145	145	145	145	145
C	76	76	76	76	76	95	95	95	95	95	95	95	120	120	120	120	120
H	211,5	233,5	238,5	264	269	313	318	334,5	402,5	445	510	480	580	670	545	590	630
K	164	181	181	194	194	243	243	252	310	345	400	355	480	560	420	450	460
L	130	150	160	180	200	180	200	230	290	310	350	400	310	350	400	480	600
M	59	59	59	59	59	90	90	90	90	90	90	90	145	145	145	145	145
N	16	16	16	16	16	25	25	25	25	25	25	25	20	20	20	20	20
t	14	16	16	16	16	16	16	18	18	20	22	24	20	22	24	26	28
PG	11	11	11	11	11	11	11	11	11	11	11	11	11	11	11	11	11
kg	5,0	5,5	6,0	8,5	10,5	13,0	16,0	21,0	28,0	47,0	63,0	80,0	39,0	60,0	87,0	95,0	108,0