

Rullo in nylon 6.*Nylon 6 roller.**Rouleau en nylon 6.**Nylonrolle 6.**Rodillo en nailon 6.***SR****IMPIEGO/Uses:**

Rullo per transpallet prodotto per stampaggio di Nylon 6 ad alta viscosità. Il materiale di primissima scelta utilizzato per la produzione, conferisce al rullo portata, una buona resistenza all'usura e agli agenti chimici. Lo scorrimento, eccellente su pavimentazioni lisce, avviene su due cuscinetti a sfere. Il rullo può essere montato su appositi supporti.

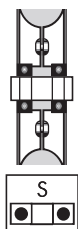
Pallet truck roller produced by high viscosity 6 nylon moulding. The material of the first choice used for production, gives the driven roller a good resistance to wear and to chemical agents. The sliding, excellent on smooth floors, occurs on two ball bearings. The roller can be mounted on special supports.

Rouleau de transpalette fabriqué pour le moulage de nylon 6 à haute viscosité. Le matériau de premier choix utilisé pour la production, donne au rouleau une bonne résistance à l'usure et aux agents chimiques. Le glissement d'une fluidité excellente sur les sols lisses est obtenu grâce à deux roulements à billes. Le rouleau peut être monté sur des supports dédiés.

Palettenrolle für hochviskoses Nylon 6 Formteil. Das für die Produktion verwendete Material erster Wahl verleiht der Walze eine gute Beständigkeit gegen Verschleiß und chemische Einflüsse. Die hervorragende Gleitwirkung auf glatten Böden wird durch zwei Kugellager erreicht. Die Rolle kann auf Stützen montiert werden.

Rodillo para transpaleta producido mediante moldeado de nailon 6 de alta viscosidad. El material de primera calidad empleado para su producción confiere al rodillo capacidad de carga, así como buena resistencia al desgaste y a los agentes químicos. El deslizamiento, excelente sobre suelos lisos, se produce en dos rodamientos de bolas. El rodillo puede montarse en soportes especiales.

SCORRIMENTO <i>Sliding</i>	PORTATA <i>Load Cap.</i>	TEMPERATURA <i>Temperature</i>	PAVIMENTO <i>Floor</i>
-------------------------------	-----------------------------	-----------------------------------	---------------------------



Cuscinetto a sfere
Balls bearing



Sede per cuscinetti
Bearing seat



120 + 950



-30°C + +80°C



Piastrelle
Tile



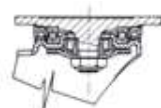
Cemento resina
Resin cement

OPTIONALS:

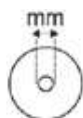
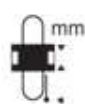
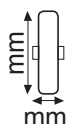
SUPPORTI APPLICABILI
Applicable supports



S10



S20



58x38	35x11	15	120	0,400
82x70	47x14	20	650	0,500
82x80	47x14	20	700	0,540
82x85	47x14	20	750	0,560
82x90	47x14	20	800	0,580
82x100	47x14	20	900	0,630
85x70	47x14	20	650	0,520
85x80	47x14	20	750	0,560
85x90	47x14	20	850	0,580
85x100	47x14	20	950	0,630



Rullo in nylon 6.

Nylon 6 roller.

Rouleau en nylon 6.

Nylonrolle 6.

Rodillo en nailon 6.



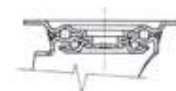
Supporti zincati serie media.

Medium zinc-plated type supports.

Support série moyenne galvanisé.

Verzinktes Lager Serie "Mittelstark".

Soporte serie mediana cincado.



S10



GP



SF



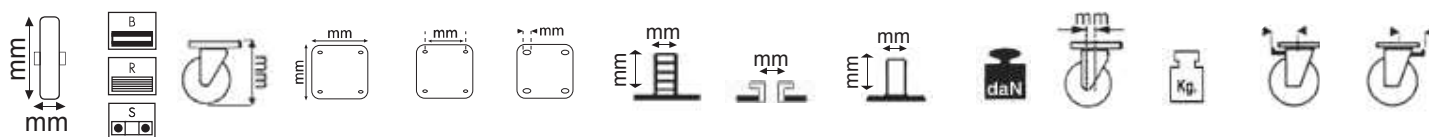
GV



GF



GC



58x38	S	80	100x85	80x60	8,5	10/12x50	10 - 12	22x50	120	38	0,700	-	-
-------	---	----	--------	-------	-----	----------	---------	-------	-----	----	-------	---	---

Rullo in nylon 6.

Nylon 6 roller.

Rouleau en nylon 6.

Nylonrolle 6.

Rodillo en nailon 6.



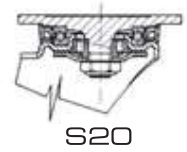
Supporto verniciato serie extrapesante.

Painted super heavy-duty type support.

Support série extralourde vernissé.

Lackiertes lager Serie "Extrastark".

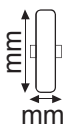
Soporte serie extrapesada barnizado.



GP



SF



mm		mm	mm	mm	mm	daN	mm	Kg
82x70	S	132	135x110	105x80	13	650	68	3,350
82x80	S	132	135x110	105x80	13	700	68	3,400
85x70	S	135	135x110	105x80	13	650	68	3,370
85x80	S	135	135x110	105x80	13	750	68	3,410